



www.keydiy.com



KD900
JUST FOR LOCKSMITH
KD900 Operation Manual

6 Functions

- 1 FREQUENCY TEST
- 2 GENERATE REMOTE
- 3 SMART MATCH
- 4 ALARM/GARAGE
- 5 OTHER FUNCTIONS
- 6 SETTINGS

CONTENTS



Part 1 KEYDIY Remotes

Page 2-3

Part 2 KD900 CAR APPLICATION LIST

Page 4-17

Part 3 KD900 Device Operation

Page 18-70

Part 4 KD900 Software Operation

Page 71-117

Part 1

KEYDIY REMOTES TYPES

B Series



B01



B02



B03



B04



B05



B06

F Series For Two Remotes In One



F01

All B serie remotes with same data inside but different shape, all can be made to the remotes of our support list.

All KEYDIY remotes can make remotes with 300-500MHZ frequency, thus as 310MHZ, 313MHZ, 314MHZ, 315MHZ, 433MHZ and so on.

KD900 REMOTE APPLICATION LIST

Part 2

KD900 REMOTE APPLICATION LIST(Europe area)

BRAND	MODEL	YEAR	Ref ORIGINAL	FREQUENCY	TRANSPONDER	Ref KD
AUDI	A3 (2 bout)	1997-00	4D0837231R	433 Mhz	Megamos Grypto ID48	4D0837231R
AUDI	A3 (3 bout)	2002-05	4D0837231A	433 Mhz	Megamos Grypto ID48	4D0837231A
AUDI	A3 (3 bout)	2002-05	4D0837231N	433 Mhz	Megamos Grypto ID48	4D0837231N
AUDI	A4 (2 bout)	1995-01	4D0837231R	433 Mhz	Megamos Grypto ID48	4D0837231R
AUDI	A4 (3 bout)	1999-01	4D0837231A	433 Mhz	Megamos Grypto ID48	4D0837231A
AUDI	A4 (3 bout)	1999-01	4D0837231N	433 Mhz	Megamos Grypto ID48	4D0837231N
AUDI	A4 (3 bout+PANIC)	1997-03	4D0837231E	315 Mhz	Megamos Grypto ID48	4D0837231E
AUDI	A4 (3 bout)	1997-04	4D0837231M	315 Mhz	Megamos Grypto ID48	4D0837231M
AUDI	A6 (2 bout)	1997-01	4D0837231R	433 Mhz	Megamos Grypto ID48	4D0837231R
AUDI	A6 (3 bout)	1997-05	4D0837231A	433 Mhz	Megamos Grypto ID48	4D0837231A
AUDI	A6 (3 bout)	1997-05	4D0837231N	433 Mhz	Megamos Grypto ID48	4D0837231N
AUDI	A6 (3 bout)	1997-04	4D0837231M	315 Mhz	Megamos Grypto ID48	4D0837231M
AUDI	A6 (3 bout+PANIC)	1997-03	4D0837231E	315 Mhz	Megamos Grypto ID48	4D0837231E
AUDI	A6 (3 bout)	2002-05	4D0837231K	433 Mhz	Megamos Grypto ID48	4D0837231K
AUDI	A6 Allroad (3 bout)	2002-05	4D0837231K	433 Mhz	Megamos Grypto ID48	4D0837231K
AUDI	A6 Quatro (3 bout)	2000-05	4D0837231K	433 Mhz	Megamos Grypto ID48	4D0837231K
AUDI	A6 (3 bout+PANIC)		4D0837231P	315 Mhz	Megamos Grypto ID48	4D0837231P
AUDI	A8 (3 bout)	1994-03	4D0837231A	433 Mhz	Megamos Grypto ID48	4D0837231A
AUDI	A8 (3 bout)	1994-03	4D0837231N	433 Mhz	Megamos Grypto ID48	4D0837231N
AUDI	A8 (3 bout)	1997-04	4D0837231M	315Mhz	Megamos Grypto ID48	4D0837231M
AUDI	A8 (3 bout+PANIC)	1997-04	4D0837231E	315 Mhz	Megamos Grypto ID48	4D0837231E
AUDI	Cabrio 2 bout	1992-00	4D0837231R	433 Mhz	Megamos Grypto ID48	4D0837231R
AUDI	Roadster (3bout)	2000-05	4D0837231K	433 Mhz	Megamos Grypto ID48	4D0837231K
AUDI	RS4 (2 bout)	2001-02	4D0837231R	433 Mhz	Megamos Grypto ID48	4D0837231R
AUDI	RS4 (3 bout)	2001-02	4D0837231A	433 Mhz	Megamos Grypto ID48	4D0837231A
AUDI	RS4 (3 bout)	2001-02	4D0837231N	433 Mhz	Megamos Grypto ID48	4D0837231N
AUDI	RS6 (3 bout)	2003-05	4D0837231K	433 Mhz	Megamos Grypto ID48	4D0837231K
AUDI	S4 (3 bout+PANIC)	1997-03	4D0837231E	315 Mhz	Megamos Grypto ID48	4D0837231E
AUDI	TT (3 bout)	1999-02	4D0837231A	433 Mhz	Megamos Grypto ID48	4D0837231A
AUDI	TT (3 bout)	1999-02	4D0837231N	433 Mhz	Megamos Grypto ID48	4D0837231N
AUDI	TT (3 bout)	2003-06	4D0837231K	433 Mhz	Megamos Grypto ID48	4D0837231K
AUDI	TT (3 bout)	1997-04	4D0837231K	315 Mhz	Megamos Grypto ID48	4D0837231K
AUDI	TT (3 bout+PANIC)	1997-05	4D0837231E	315 Mhz	Megamos Grypto ID48	4D0837231E

BRAND	MODEL	YEAR	Ref ORIGINAL	FREQUENCY	TRANSPONDER	Ref KD
BMW	Serie 3 (E36)	1996-04	51218 368192	433 Mhz	Philips Crypto PCF7935	BMW433EWS
BMW	Serie 3 (E46)	1999-05	51218 368192	433 Mhz	Philips Crypto PCF7935	BMW433EWS
BMW	Serie 3 (E46)	2001-04	66126 955748	433 Mhz	Philips Crypto PCF7935	BMW433EWS
BMW	Serie 3 (E36)	1999-04		315 Mhz	Philips Crypto PCF7935	BMW315EWS
BMW	Serie 3 (E46)	1999-05		315 Mhz	Philips Crypto PCF7935	BMW315EWS
BMW	Serie 3 (E46)	2001-04		315 Mhz	Philips Crypto PCF7935	BMW315EWS
BMW	Serie 5 (E60)	1995-06	51218 368192	433 Mhz	Philips Crypto PCF7935	BMW433EWS
BMW	Serie 5 (E60)	1995-06	66126 955748	315 Mhz	Philips Crypto PCF7935	BMW315EWS
BMW	X3 (E83)	2004-10	66126 955748	433 Mhz	Philips Crypto PCF7935	BMW433EWS
BMW	X3 (E83)	2004-08		315 Mhz	Philips Crypto PCF7935	BMW315EWS
BMW	X5 (E53)	2000-06	66126 955748	433 Mhz	Philips Crypto PCF7935	BMW433EWS
BMW	X5 (E53)	1999-06		315 Mhz	Philips Crypto PCF7935	BMW315EWS
CHERY	A3	2008-10		433Mhz		A3
CHERY	Tiggo	2006 >		433Mhz		Tiggo
CHERY	Tiggo	2006 >		315Mhz		Tiggo
CHERY	QQ	2003 >		433Mhz		QQ
CHERY	QQ	2003 >		315Mhz		QQ
CHEVROLET	(2 bout)			433Mhz		2 bout
CHEVROLET	(3 bout)			433Mhz		3 bout
CHEVROLET				433Mhz		CHEVROLET02
CHEVROLET				433Mhz		CHEVROLET04
FORD	C-MAX (3 bout)	2003 >	1337641	433Mhz	Texas Crypto ID63	F4-433-AUTOWINDOWS
FORD	C-MAX (3 bout)	2003 >	1337641	315Mhz	Texas Crypto ID63	F3-AUTOWINDOWS
FORD	Connect	2002-06	1233541	433Mhz	Texas Crypto ID60	F2-433-3A
FORD	Connect	2002-06	4622489	433Mhz	TN/A	F2-433-3A
FORD	Connect	2002-06	1233203	433Mhz	Texas Crypto ID63	F2-433-3A
FORD	Cougar	1998-00	1235189	433Mhz	Texas Fixe ID4C	F2-433-3A
FORD	Fiesta	2001-02	1235189	433Mhz	Texas Fixe ID4C	F2-433-3A
FORD	Fiesta	2003-10	1233203	433Mhz	Texas Crypto ID63	F2-433-3A
FORD	Fiesta	2008-11	1337641	433Mhz	Texas Crypto ID63	F2-433-3C
FORD	Focus	1998-05	1233541	433Mhz	Texas Crypto ID60	F2-433-3A
FORD	Focus	2004-10	1233203	433Mhz	Texas Crypto ID63	F2-433-3A
FORD	Focus	2005-11	1337641	433Mhz	Texas Crypto ID63	F2-433-3C
FORD	Fusion	2002-06	1233203	433Mhz	Texas Crypto ID63	F2-433-3A
FORD	Galaxy	2006-10	1337141	433Mhz	Texas Crypto ID63	F2-433-3A

BRAND	MODEL	YEAR	Ref ORIGINAL	FREQUENCY	TRANSPONDER	Ref KD
FORD	Galaxy	2006-10	1337141	433Mhz	Texas Crypto ID63	F2-433-3C
FORD	Kia	2000-08	1235189	433Mhz	Texas Fixe ID4C	F2-433-3A
FORD	Kuga	2008>	1337141	433Mhz	Texas Crypto ID63	F2-433-3C
FORD	Mondeo	1998-01	1235189	433Mhz	Texas Fixe ID4C	F2-433-3A
FORD	Mondeo	2001-07	1235541	433Mhz	Texas Crypto ID60	F2-433-3A
FORD	Mondeo	2007-11	1337141	433Mhz	Texas Crypto ID63	F2-433-3C
FORD	Mondeo	2008-10	1233203	433Mhz	Texas Crypto ID63	F2-433-3A
FORD	Puma	1999-02	1235189	433Mhz	Texas Fixe ID4C	F2-433-3A
FORD	S-MAX	2006-10	1337141	433Mhz	Texas Crypto ID63	F2-433-3C
FORD	Transit	1995-99	1235189	433Mhz	Texas Fixe ID4C	F2-433-3A
FORD	Transit	2000-06	4622489	433Mhz	N/A	F2-433-3A
FORD	Transit	2000-07	1233541	433Mhz	Texas Crypto ID60	F2-433-3A
GMC				315Mhz		GM2-2
GMC				315Mhz		GM2-3
GMC				315Mhz		GM2-4
HONDA	Civic	2003-05	35111SAA305	433Mhz	Megamos Crypto ID48	HD32.4
HONDA	CRV	2005-07	35111SAA305	433Mhz	Megamos Crypto ID48	HD32.4
HONDA	FRV	2005-06	35111SAA305	433Mhz	Megamos Crypto ID48	HD32.a
HONDA	HRV[Gh]	1999-06	35111SAA305	433Mhz	Megamos Crypto ID48	HD32.4
HONDA	Jazz	2002-06	35111SAA305	433Mhz	Megamos Crypto ID48	HD32.4
HONDA	Stream	2004-06	35111SAA305	433Mhz	Megamos Crypto ID48	HD32.4
HYUNDAI	Elantra	2000-04	81996 25010	433Mhz	Philips Crypto PCF7936	HY1ELANTRA
HYUNDAI	Elantra	2000-06		315Mhz	Philips Crypto PCF7936	HY2ELANTRA
HYUNDAI	i10	2008-13	95411-2B200	433Mhz	Philips Crypto PCF7936	i10
HYUNDAI	i20	<2011	95430-1J000	433Mhz	Philips Crypto PCF7936	HY1IX35
HYUNDAI	i30	<2012	95430-2L600	433Mhz	Philips Crypto PCF7936	HY6I30-433
HYUNDAI	i30	<2012	95440-A6000	433Mhz	Philips Crypto PCF7936	NEW I30
HYUNDAI	IX20	<2009	95430-1K000	433Mhz	Philips Crypto PCF7936	IX20
HYUNDAI	IX30	<2010	95430-1K000	433Mhz	Philips Crypto PCF7936	HY1IX35
JAGUAR	S-Type	1999-09	C2C35284	433Mhz	Texas Crypto ID60	JB433
JAGUAR	S-Type	1999-09		315Mhz	Texas Crypto ID60	JB315
JAGUAR	X-Type	2002-12	C2C35284	433Mhz	Texas Crypto ID60	JB433
JAGUAR	X-Type	2002-12		315Mhz	Texas Crypto ID60	JB315
JAGUAR	XJ	2002-08	C2C35284	433Mhz	Texas Crypto ID60	JB433
JAGUAR	XJ	2002-08		315Mhz	Texas Crypto ID60	JB315

BRAND	MODEL	YEAR	Ref ORIGINAL	FREQUENCY	TRANSPONDER	Ref KD
JAGUAR	XJR	2002-08	C2C35284	433Mhz	Texas Crypto ID60	JB433
JAGUAR	XJR	2002-08		315Mhz	Texas Crypto ID60	JB315
KIA	C' Eed	2012>	819961H200	433Mhz	Philips Crypto PCF7936	HY1IX35
KIA	Carrens	2002-12	954302F951	433Mhz	Philips Crypto PCF7936	CARENS
KIA	Carrens			315Mhz	Philips Crypto PCF7936	CARENS315
KIA	Rio	2010>	954301W050	433Mhz	Philips Crypto PCF7936	RIO
KIA	Soul	2009-11	954302K310	433Mhz	Philips Crypto PCF7936	KIA-SOUL
KIA	Sportage (2 bout)	2010-14	954303U001	433Mhz	Philips Crypto PCF7936	SP2SPORTAGE
KIA	Sportage (3 bout)	2010-14	954303U000	433Mhz	Philips Crypto PCF7936	SP3SPORTAGE
KIA				433Mhz	Philips Crypto PCF7936	HY8-FRD-433
KIA				433Mhz	Philips Crypto PCF7936	HY9-K2-433
KIA				433Mhz	Philips Crypto PCF7936	K3
KIA			TKF8180012A	433Mhz	Philips Crypto PCF7936	One button
LAND ROVER				433Mhz		land433
LAND ROVER				315Mhz		land315
MAZDA	Mazda 2 (2 bout)	2003-05	GJ6A675RYB	433Mhz	Texas Crypto ID63	MD4-MZD2
MAZDA	Mazda 2 (3 bout)	2005>	DH55675RYC	433Mhz	Texas Crypto ID63	MD9
MAZDA	Mazda 3 (2 bout)	2004-08	GJ6A675RYD	433Mhz	Texas Crypto ID63	MD341521
MAZDA	Mazda 3			315Mhz		MD141797
MAZDA	Mazda 5 (2 bout)	2003-05	GJ6A675RYB	433Mhz	Texas Crypto ID63	MD4-MZD2
MAZDA	Mazda 5 (3 bout)	2005>	DH55675RYC	433Mhz	Texas Crypto ID63	MD9
MAZDA	Mazda 6 (2 bout)	2004-08	GP9F675RYD	433Mhz	Texas Crypto ID63	MD341521
MAZDA	Mazda 6 (3 bout)	2005>	DH55675RYC	433Mhz	Texas Crypto ID63	MD9
MAZDA	Mazda 6			315Mhz		MD141797
MAZDA				315Mhz		MD241840
MAZDA				315Mhz		MD241840
MAZDA						MD5
MAZDA						MD5-4
MAZDA	Mazda 6 (4 bout)			315Mhz		MD841805-4
MAZDA						MD8418463-3
MAZDA				433Mhz		MZD11
MAZDA				315Mhz		MZD10
MAZDA				315Mhz		misub
MAZDA				315Mhz		MITSU03
MAZDA				433Mhz		MITSU04

BRAND	MODEL	YEAR	Ref ORIGINAL	FREQUENCY	TRANSPONDER	Ref KD
MAZDA				315Mhz		V73
MAZDA				315Mhz		V73-1
NISSAN	Almera	2003-06	282689F974	433Mhz	Philips Crypto PCF7936	NissanN9
NISSAN	Almera Tino	2003	282689F974	433Mhz	Philips Crypto PCF7936	NissanN9
NISSAN	Navara	2003-08	282689F974	433Mhz	Philips Crypto PCF7936	NissanN9
NISSAN	Primera	2003-08	282689F974	433Mhz	Philips Crypto PCF7936	NissanN9
NISSAN	X-Trail	2003-08	282689F974	433Mhz	Philips Crypto PCF7936	NissanN9
NISSAN				315Mhz		Nissan
OPEL	Combo	2002-08	9115104	433Mhz	Texas Crypto ID40	Opel Corsa
OPEL	Combo	2002-09	13.199.00	433Mhz	Texas Crypto ID40	Opel Corsa
OPEL	Corsa C	2001-07	9115104	433Mhz	Texas Crypto ID40	Opel Corsa
OPEL	Corsa C	2001-07	13.199.00	433Mhz	Texas Crypto ID40	Opel Corsa
OPEL	Meriva A	2009>	9115104	433Mhz	Texas Crypto ID40	Opel Corsa
OPEL	Meriva A	2009>	13.199.00	433Mhz	Texas Crypto ID40	Opel Corsa
OPEL	Tigra B	2004>	9115104	433Mhz	Texas Crypto ID40	Opel Corsa
OPEL	Tigra B	2004>	13.199.00	433Mhz	Texas Crypto ID40	Opel Corsa
OPEL				433Mhz		Corsa
OPEL				433Mhz		OPEL001
OPEL				433Mhz		OPEL002
RENAULT Truck				433Mhz		TRUCK
SEAT	Alambra	1998-05	7M3959735	433Mhz	Philips Crypto ID42	4generation
SEAT	Alambra	1998-05	7M395973F	433Mhz	Philips Crypto ID42	5G
SEAT	Alambra	2005-10	7M395973	433Mhz	Megamos Crypto ID48	4generation
SEAT	Alambra	2004-09	7M395973F	433Mhz	Philips Crypto ID42	5G
SEAT	Altea	2004-09	1K0959753G	433Mhz	Philips Crypto ID42	1K0753GSEAT
SEAT	Arosa	1997-99	1J0959753CT	433Mhz	Philips Crypto ID33	1J0753CTSEAT
SEAT	Arosa	1997-99	1J0959753AG	433Mhz	Philips Fixe ID42	1J0753AGSEAT
SEAT	Arosa	1997-03	1J0959753N	433Mhz	Philips Fixe ID42	1J0959753NSEAT
SEAT	Arosa	1999-01	1J0959753N	433Mhz	Philips Crypto ID42	1J0959753NSEAT
SEAT	Arosa	1991-01	1J0959453CT	433Mhz	Philips Crypto ID44	1J0753CTSEAT
SEAT	Arosa	1991-01	1J0959453AG	433Mhz	Philips Crypto ID44	1J0753AGSEAT
SEAT	Arosa	2001-05	1J0959753N	433Mhz	Philips Crypto ID44	1J0959753NSEAT
SEAT	Arosa	2001-05	1J0959753CT	433Mhz	Philips Crypto ID44	1J0959753CTSEAT
SEAT	Arosa	2001-05	1J0959753AG	433Mhz	Philips Crypto ID44	1J0959753AGSEAT
SEAT	Arosa	2005-07	1J0959753N	433Mhz	Megamos Crypto ID48	1J0959753NSEAT

BRAND	MODEL	YEAR	Ref ORIGINAL	FREQUENCY	TRANSPONDER	Ref KD
SEAT	Arosa	2005-07	1J0959753CT	433Mhz	Megamos Crypto ID48	1J0959753CTSEAT
SEAT	Arosa	2005-07	1J0959753AG	433Mhz	Megamos Crypto ID48	1J0959753AGSEAT
SEAT	Cordoba	1998-01	7M3959753	433Mhz	Megamos Crypto ID48	4generation
SEAT	Cordoba	1998-01	7M3959753F	433Mhz	Megamos Crypto ID48	5G
SEAT	Cordoba	2002-09	1J0959753CT	433Mhz	Megamos Crypto ID48	1J0753CTSEAT
SEAT	Cordoba	2002-09	1J0959753AG	433Mhz	Megamos Crypto ID48	1J0753AGSEAT
SEAT	Ibiza	1998-02	7M3959753	433Mhz	Philips Crypto ID42	4generation
SEAT	Ibiza	1998-02	7M3959753F	433Mhz	Philips Crypto ID42	5G
SEAT	Ibiza	2002-09	1J0959753CT	433Mhz	Megamos Crypto ID48	1J0753CTSEAT
SEAT	Ibiza	2002-09	1J0959753AT	433Mhz	Megamos Crypto ID48	1J0753ATSEAT
SEAT	Ibiza	2008-09	1J0959753N	433Mhz	Megamos Crypto ID48	1J0753NSEAT
SEAT	Leon	2000-02	1J0959753N	433Mhz	Megamos Crypto ID48	1J0753NSEAT
SEAT	Leon	2002-05	1J0959753DA	433Mhz	Megamos Crypto ID48	1J0753DASEAT
SEAT	Leon	2002-05	1J0959753AH	433Mhz	Megamos Crypto ID48	1J0753AHSEAT
SEAT	Leon	2002-06	1J0959753CT	433Mhz	Megamos Crypto ID48	1J0753CTSEAT
SEAT	Leon	2002-06	1J0959753AG	433Mhz	Philips Crypto ID42	1J0753AGSEAT
SEAT	Mili	2011>	7M5837202H	433Mhz	Megamos Crypto ID48	
SEAT	Toledo	1999-01	1J0959753N	433Mhz	Megamos Fixe ID13	1J0959753NSEAT
SEAT	Toledo	2001-03	1J0959753DA	433Mhz	Megamos Crypto ID48	1J0753DASEAT
SEAT	Toledo	2001-03	1J959753AH	433Mhz	Megamos Crypto ID48	1J0753AHSEAT
SEAT	Toledo	2002-04	1J0959753CT	433Mhz	Megamos Crypto ID48	1J0753CTSEAT
SEAT	Toledo	2002-04	1J0959753AG	433Mhz	Megamos Crypto ID48	1J0753AGSEAT
SEAT	Toledo	2005-09	1K0959753G	433Mhz	Megamos Crypto ID48	1K0753GSEAT
SEAT	Vario	2002-09	1J0959753CT	433Mhz	Megamos Crypto ID48	1J0753CTSEAT
SEAT	Vario	2002-09	1J0959753AG	433Mhz	Megamos Crypto ID48	1J0753AGSEAT
SKODA	City	2011 >	3T0837202H	433Mhz	Megamos Crypto ID48	5K0-V8
SKODA	Fabia	2002-08	1J0959753CT	433Mhz	Megamos Crypto ID48	1J0753CTSKODA
SKODA	Fabia	2002-08	1J0959753AG	433Mhz	Megamos Crypto ID48	1J0753AGSKODA
SKODA	Fabia	2002-08	1J0959753DA	433Mhz	Megamos Crypto ID48	1J0753DASKODA
SKODA	Fabia	2002-08	1J0959753AH	433Mhz	Megamos Crypto ID48	1J0753AHSKODA
SKODA	Fabia	2008-11	1K0959753N	433Mhz	Megamos Crypto ID48	V7-735N-SKODA
SKODA	Fabia	2011 >	1J0959753DA	433Mhz	Megamos Crypto ID48	5K0-V8
SKODA	Octavia	1997-01	1J0959753N	433Mhz	Megamos Fixe ID13	1J0753NSKODA
SKODA	Octavia	2001-06	1J0959753DA	433Mhz	Megamos Crypto ID48	1J0753DASKODA
SKODA	Octavia	2001-06	1J0959753AH	433Mhz	Megamos Crypto ID48	1J0753AHSKODA

BRAND	MODEL	YEAR	Ref ORIGINAL	FREQUENCY	TRANSPONDER	Ref KD
SKODA	Octavia	2001-06	1J0959753CT	433Mhz	Megamos Crypto ID48	1J0753CTSKODA
SKODA	Octavia	2001-09	1J0959753CT	433Mhz	Megamos Crypto ID48	1J0753CTSKODA
SKODA	Octavia	2004-09	1J0959753G	433Mhz	Megamos Crypto ID48	1J0753GSKODA
SKODA	Octavia	2009-11	1J0959753N	433Mhz	Megamos Crypto ID48	V7-753N-SKODA
SKODA	Octavia	2011 >	3T0837202H	433Mhz	Megamos Crypto ID48	5K0-V8
SKODA	Superb	2008-09	1K0959753N	433Mhz	Megamos Crypto ID48	V7-753N-SKODA
SKODA	Superb	2011 >	3T0837202H	433Mhz	Megamos Crypto ID48	5K0-V8
SKODA	Yeti	2011 >	3T0837202H	433Mhz	Megamos Crypto ID48	5K0-V8
SUBARU				433Mhz		SBL-433-TX
SUBARU				433Mhz		subaru02
SUZUKI				433Mhz		SZK001
SUZUKI				315Mhz		SZK002
SSANGYOUNG				447Mhz		SSAN01
SSANGYOUNG				447Mhz		SSAN02
TOYOTA	Celica (2 bout)	2004>	50171	433Mhz	Texas Fixe ID4C	TYT50171
TOYOTA	Celica (2 bout)	2007>	50171	433Mhz	Texas Fixe ID4C	TYT50171
TOYOTA	Hiace (2 bout)	2007>	50171	433Mhz	Texas Fixe ID4C	TYT50171
TOYOTA	Hiace (2 bout)	2007-09	50171	433Mhz	Texas Crypto ID67	TYT50171
TOYOTA	Innova (2 bout)	2003-05	50171	433Mhz	Texas Fixe ID4C	TYT50171
TOYOTA	Innova (2 bout)	2005-10	50171	433Mhz	Texas Crypto ID67	TYT50171
TOYOTA	Land Cruiser (2 bo)	1998-03	50171	433Mhz	Texas Fixe ID4C	TYT50171
TOYOTA	MR2(2 bout)	2001-05	50171	433Mhz	Texas Fixe 4C	TYT50171
TOYOTA	Previa (2 bout)	2006 >	50171	433Mhz	Texas Crypto ID67	TYT50171
TOYOTA	RAV4 (2 bout)	2000-05	50171	433Mhz	Texas Fixe ID4C	TYT50171
TOYOTA	Yaris	2001-06	50171	433Mhz	Texas Fixe ID4C	TYT50171
VOLKSWAGEN	Amarock	2011 >	7E0837202M	433Mhz	Megamos Crypto ID48	VW5K0 remote
VOLKSWAGEN	Beetle	1999-02	1J0959753B	433Mhz	Megamos Crypto ID48	1J0959753BVW
VOLKSWAGEN	Beetle	2001-09	1J0959753DA	433Mhz	Megamos Crypto ID48	1J0959753DAVW
VOLKSWAGEN	Beetle	2001-09	1J0959753AH	433Mhz	Megamos Crypto ID48	1J0959753AHVW
VOLKSWAGEN	Beetle	2002-05	1J0959753P	433Mhz	Megamos Crypto ID48	1J0959753pVW
VOLKSWAGEN	Beetle	2012 >	5K0837202Q	433Mhz	Megamos Crypto ID48	VW5K0 remote
VOLKSWAGEN	Beetle	2012 >	5K0837202AD	433Mhz	Megamos Crypto ID48	VW5K0 remote
VOLKSWAGEN	Beetle Cabrio	2003-09	1J0959753DA	433Mhz	Megamos Crypto ID48	1J959753DAVW
VOLKSWAGEN	Beetle Cabrio	2003-09	1J0959753AH	433Mhz	Megamos Crypto ID48	1J959753AHVW
VOLKSWAGEN	Bora	1999-01	1J0959753A	433Mhz	Megamos Crypto ID48	1J0959753AVW

BRAND	MODEL	YEAR	Ref ORIGINAL	FREQUENCY	TRANSPONDER	Ref KD
VOLKSWAGEN	Bora	1999-01	1J0959753N	433Mhz	Megamos Crypto ID48	1J0959753NVW
VOLKSWAGEN	Bora	1999-05	1J0959753DA	433Mhz	Megamos Crypto ID48	1J0959753DAVW
VOLKSWAGEN	Bora	1999-05	1J0959753AH	433Mhz	Megamos Crypto ID48	1J0959753AHVW
VOLKSWAGEN	Bora	1999-05	1J0959753CT	433Mhz	Megamos Crypto ID48	1J0959753CTVW
VOLKSWAGEN	Bora	1999-05	1J0959753AG	433Mhz	Megamos Crypto ID48	1J0959753AGVW
VOLKSWAGEN	Caddy	2004-09	1K0959753G	433Mhz	Megamos Crypto ID48	1K0959753GVW
VOLKSWAGEN	Caddy	2011 >	5K0837202Q	433Mhz	Megamos Crypto ID48	VW5K0 remote
VOLKSWAGEN	Caddy	2011 >	5K0837202AD	433Mhz	Megamos Crypto ID48	VW5K0 remote
VOLKSWAGEN	Camper	2010 >	5K0837202Q	433Mhz	Megamos Crypto ID48	VW5K0 remote
VOLKSWAGEN	Camper	2010 >	5K0837202AD	433Mhz	Megamos Crypto ID48	VW5K0 remote
VOLKSWAGEN	Eos	2006-09	1K0959753G	433Mhz	Megamos Crypto ID48	1K0959753GVW
VOLKSWAGEN	Eos	2009-13	5K0837202Q	433Mhz	Megamos Crypto ID48	VW5K0 remote
VOLKSWAGEN	Eos	2009-13	5K0837202AD	433Mhz	Megamos Crypto ID48	VW5K0 remote
VOLKSWAGEN	Golf Cabrio	2012 >	5K0837202Q	433Mhz	Megamos Crypto ID48	VW5K0 remote
VOLKSWAGEN	Golf Cabrio	2012 >	5K0837202AD	433Mhz	Megamos Crypto ID48	VW5K0 remote
VOLKSWAGEN	Golf Estate	2009-12	5K0837202Q	433Mhz	Megamos Crypto ID48	VW5K0 remote
VOLKSWAGEN	Golf Estate	2009-12	5K0837202AD	433Mhz	Megamos Crypto ID48	VW5K0 remote
VOLKSWAGEN	Golf IV	1998-02	1J0959753A	433Mhz	Megamos Crypto ID48	1J959753AVW
VOLKSWAGEN	Golf IV	1998-02	1J0959753N	433Mhz	Megamos Crypto ID48	1J959753NVW
VOLKSWAGEN	Golf IV	2002-06	1J0959753DA	433Mhz	Megamos Crypto ID48	1J959753DAVW
VOLKSWAGEN	Golf IV	2002-06	1J0959753AH	433Mhz	Megamos Crypto ID48	1J959753AHVW
VOLKSWAGEN	Golf IV	2002-06	1J0959753CT	433Mhz	Megamos Crypto ID48	1J959753CTVW
VOLKSWAGEN	Golf IV	2002-06	1J0959753AG	433Mhz	Megamos Crypto ID48	1J959753AGVW
VOLKSWAGEN	Golf Plus	2009-12	5K0837202Q	433Mhz	Megamos Crypto ID48	VW5K0 remote
VOLKSWAGEN	Golf Plus	2009-12	5K0837202AD	433Mhz	Megamos Crypto ID48	VW5K0 remote
VOLKSWAGEN	Golf V	2005-08	1K0959753G	433Mhz	Megamos Crypto ID48	1K0959753GVW
VOLKSWAGEN	Golf VI	2009	1K0959753N	433Mhz	Megamos Crypto ID48	1K0959753N
VOLKSWAGEN	Golf VI	2009	1K0959753N	433Mhz	Megamos Crypto ID48	1K0959753N
VOLKSWAGEN	Golf VI	2009-12	5K0837202Q	433Mhz	Megamos Crypto ID48	VW5K0 remote
VOLKSWAGEN	Golf VI	2009-12	5K0837202AD	433Mhz	Megamos Crypto ID48	VW5K0 remote
VOLKSWAGEN	Jetta	2006-09	1K0959753G	433Mhz	Megamos Crypto ID48	1K0959753GVW
VOLKSWAGEN	Jetta	2006-11	5K0837202Q	433Mhz	Megamos Crypto ID48	VW5K0 remote
VOLKSWAGEN	Jetta	2006-11	5K0837202AD	433Mhz	Megamos Crypto ID48	VW5K0 remote
VOLKSWAGEN	Passat	1995-00	1J0959753A	433Mhz	Megamos Crypto ID48	1J959753AVW
VOLKSWAGEN	Passat	2000-05	1J0959753DA	433Mhz	Megamos Crypto ID48	1J959753DAVW

BRAND	MODEL	YEAR	Ref ORIGINAL	FREQUENCY	TRANSPONDER	Ref KD
VOLKSWAGEN	Passat	2000-05	1J0959753AH	433Mhz	Megamos Crypto ID48	1J959753AHVW
VOLKSWAGEN	Polo	2002-05	1J0959753CT	433Mhz	Megamos Crypto ID48	1J0959753CTVW
VOLKSWAGEN	Polo	2002-05	1J0959753AG	433Mhz	Megamos Crypto ID48	1J0959753AGVW
VOLKSWAGEN	Polo	2002-09	1J0959753DA	433Mhz	Megamos Crypto ID48	1J0959753DAVW
VOLKSWAGEN	Polo	2002-09	1J0959753AH	433Mhz	Megamos Crypto ID48	1J0959753AHVW
VOLKSWAGEN	Polo	2010-11	1J0959753N	433Mhz	Megamos Crypto ID48	1J0959753NVW
VOLKSWAGEN	Polo	2010-13	5K0837202Q	433Mhz	Megamos Crypto ID48	VW5K0 remote
VOLKSWAGEN	Polo	2010-13	5K0837202AD	433Mhz	Megamos Crypto ID48	VW5K0 remote
VOLKSWAGEN	Scirroco	2009	1K0959753G	433Mhz	Megamos Crypto ID48	1K0959753GVW
VOLKSWAGEN	Scirroco	2009-13	5K0837202Q	433Mhz	Megamos Crypto ID48	VW5K0 remote
VOLKSWAGEN	Scirroco	2009-13	5K0837202AD	433Mhz	Megamos Crypto ID48	VW5K0 remote
VOLKSWAGEN	Sharan	2001-09	7M3959753	433Mhz	Philips Crypto ID44	
VOLKSWAGEN	Sharan	2011 >	5K0837202Q	433Mhz	Megamos Crypto ID48	VW5K0 remote
VOLKSWAGEN	Sharan	2011 >	5K0837202AD	433Mhz	Megamos Crypto ID48	VW5K0 remote
VOLKSWAGEN	Tiguan	2008-09	1K0959753G	433Mhz	Megamos Crypto ID48	1K0959753GVW
VOLKSWAGEN	Tiguan	2008-12	5K0837202Q	433Mhz	Megamos Crypto ID48	VW5K0 remote
VOLKSWAGEN	Tiguan	2008-12	5K0837202AD	433Mhz	Megamos Crypto ID48	VW5K0 remote
VOLKSWAGEN	Touran	2003-09	1K0959753G	433Mhz	Megamos Crypto ID48	1K0959753GVW
VOLKSWAGEN	Touran	2011-14	5K0837202Q	433Mhz	Megamos Crypto ID48	VW5K0 remote
VOLKSWAGEN	Touran	2011-14	5K0837202AD	433Mhz	Megamos Crypto ID48	VW5K0 remote
VOLKSWAGEN	Transporter	2003-09	1J0959753CT	433Mhz	Megamos Crypto ID48	1J959753CTVW
VOLKSWAGEN	Transporter	2003-09	1J0959753AG	433Mhz	Megamos Crypto ID48	1J959753AGVW
VOLKSWAGEN	Transporter	2010 >	7E0837202M	433Mhz	Megamos Crypto ID48	
VOLKSWAGEN	Transporter	2010 >	7E0959753M	433Mhz	Megamos Crypto ID48	
VOLKSWAGEN	Transporter Facelift	2010-14	5K0837202Q	433Mhz	Megamos Crypto ID48	VW5K0 remote
VOLKSWAGEN	Transporter Facelift	2010-14	5K0837202AD	433Mhz	Megamos Crypto ID48	VW5K0 remote
VOLKSWAGEN	UP	2011 >	5K0837202Q	433Mhz	Megamos Crypto ID48	VW5K0 remote
VOLKSWAGEN	UP	2011 >	5K0837202AD	433Mhz	Megamos Crypto ID48	VW5K0 remote

— More remotes are being added —

KD900 REMOTE APPLICATION LIST(America area)

Audi

TT A3 A5 A6 (98-08)

Buick

Allure (05-08) Century (97-05) Enclave (08-10) LaCrosse (05-09) LeSabre (96-05) Lucerne (06-10)
Park Avenue (96-05) Regal (97-04) Rendezvous (02-07) Riviera (96-99) Skylark (97-98) Terraza (05-07)

Cadillac

Catera (00-01) CTS (08-11) Deville (98-05) DTS (06-11) Eldorado (98-02)
Escalade (99-00,02-11) Escalade ESV (07-08) Escalade EXT (03-07) Seville (98-04) SRX (07-09)

Chevrolet

Astro (97-05) Avalanche (02-10) Blazer (97-05) C/K Series Pickup (97-99) Camaro (96-02)
Cavalier (97-99) Classic (04-05) Cobalt (05-10) Colorado (04-10) Corvette (01-04)
Equinox (05-09) Express (99-11) G-Series Van (97-98) HHR (06-11) Impala (00-11)
Lumina (97-01) Malibu (97-11) Malibu Maxx (04-07) Monte Carlo (97-07) S10 (97-04)
Silverado (99-11) SSR (03-06) Suburban (97-11) Tahoe (97-11) Tracker (99-04)
Traverse (09-11) Uplander (05-08) Venture (97-05)

Chrysler

300M (99-04) Concorde (98-04) Grand Voyager (00) LHS (98-01) Prowler (02) Chrysler (cont.)
PT Cruiser (01-05) Sebring (01-06) Sebring Coupe (02-05) Town & Country (99-03) Voyager (01-03)

Dodge

Caravan (99-03) Dakota (99-04) Durango (99-03) Grand Caravan (99-03) Intrepid (98-04)
Neon (00-05) Ram Pickup (99-05) Ram Van (99-03) Ram Wagon (99-03) Stratus (01-06)
Stratus Coupe (02-05) Viper (03-10)

Ford

Bronco (94-96) Contour (95-00) Crown Victoria (93-11) Edge (07-11) Escape (01-11)
Escape Hybrid (07-10) Escort (97-02) Escort ZX2 (02-03) E-Series/Econoline/Club W. Van (92-11)
Excursion (00-05) Expedition (97-11) Explorer (93-11) Explorer Sport (00-03)
Explorer Sport Trac (01-09) F150 Heritage (04) Fiesta (11-12) Five Hundred (05-07)
Flex (09-11) Focus (00-11) Freestar (04-07) Freestyle (05-07)
F-Series/F150/F250 LD PU (94-11) F-Series/F250/F350/F450 SD PU (99-11)
Fusion (06-11) Mustang (94-11) Probe (93-97) Ranger (95-11) Taurus (93-11)
Taurus X (08-09) Thunderbird (93-97,02-06) Windstar (95-03)

GMC

Acadia (07-11) Canyon (04-10) Envoy (98-00) Jimmy (97-04) Safari (97-05)
Savana (97-10) Sierra (97-10) Sonoma (97-04) Suburban (97-99) Yukon (97-11)

Hummer

H1 (03) H2 (03-09) H3 (06-10)

HYUNDAI

Hyundai Elantra 2000 - 2002 Hyundai Santa Fe 2002 - 2004 Hyundai Santa Fe (2700cc Engine Only) 2005 - 2008
Hyundai Sonata 2001 - 2004 Hyundai Tiburon 2002 - 2010 Hyundai Trajet 2002 - 2004
Hyundai Tucson 2008 - 2010

Infiniti

FX35 (03-08) FX45 (03-07) G35 Coupe (03-06) G35 Sedan (03-06) I30 (00-01)
I35 (02-04) QX4 (01-04) QX56 (04-07)

Isuzu

Amigo (98-00) Axiom (02-04) i-280 (06) i-290 (08) i-350 (06)
i-370 (07-08) Rodeo (98-04) Rodeo Sport (01-02) Trooper (98-02)

Jaguar					
S-Type (00-06) XK (04)	XJ Series (06) XK8 (02-02,06)	XJ Sport (02-03) XKR (01-03,06)	XJ6 (01-03) X-Type (02-06)	XJ8 (01-06)	XJR (01-03,06)
Jeep					
Cherokee (99-01)	Grand Cherokee (99-04)		Liberty (02-04)		
Lexus					
ES 300 (00-03) GX 470 (03-09) RX 300 (98-03) SC 400 (98-00)	ES 330 (04-06) IS 300 (01-05) RX 330 (04-06) SC 430 (02-09)	GS 300 (98-05) LS 400 (98-00) RX 350 (07-09)	GS 400 (98-00) LS 430 (01-06) RX 400h (06-08)	GS 430 (01-05) LX 470 (98-07) SC 300 (98-00)	
Lincoln					
Aviator (03-05) Mark LT (06-08) Navigator (98-10)	Blackwood (02-03) Mark VIII (93-98) Town Car (93-11)	Continental (92-02) MKS (09) Zephyr (06)	Lincoln (cont.) MKX (07-10)	LS (00-06) MKZ (07-10)	
Mazda					
3 (07-09)	B-Series (95-10)	Mazdaspeed3 (07-08)	Tribute (01-10)		
Mercury					
Cougar (93-97,99-02) Mariner Hybrid (08-10) Mountaineer (97-10)	Grand Marquis (93-11) Milan (06-10) Mystique (95-00)	Marauder (03-04) Montego (05-07) Sable (93-05,08-09)	Mariner (05-10) Monterey (04-07) Tracer (97-99)		
Mitsubishi					
Diamante (93-95,00-04) Lancer (02-11)	Eclipse (93-94,02-11) Lancer Evolution (03-06,08-10)	Eclipse Spyder (07) Montero (93-96,01-06)	Endeavor (04-11) Montero Sport (00-04)	Galant (93-98,02-11) Outlander (03-11)	

Nissan				
350Z (03-08) Maxima (00-06) Sentra (00-12)	Altima (02-06) Murano (03-07) Titan (04-10)	Armada (04-11) Pathfinder (01-12) Versa Hatchback (07-09)	Cube (09-10) Quest (04-10) Versa Sedan (07-09)	Frontier (01-10) Rogue (08-12) Xterra (01-10)
Oldsmobile				
Achieva (97-98) Eighty Eight (96-99) Silhouette (97-04)	Alero (99-04) Intrigue (98-02)	Aurora (96-99,01-03) LSS (96-99)	Bravada (97-01) Ninety Eight (96)	Cutlass (97-00) Regency (97-99)
Plymouth				
Grand Voyager (99-00)	Neon (00-01)	Prowler (00-01)	Voyager (99-00)	
Pontiac				
Aztek (01-05) G8 (08-09) Solstice (06-09)	Bonneville (96-05) Grand Am (97-05) Sunfire (97-99)	Firebird (96-02) Grand Prix (97-08) Torrent (06-09)	G5 (07-09) Montana (99-05) Trans Sport (97-98)	G6 (05-10) Montana SV6 (05-08) Vibe (03-09)
Saturn				
Aura (07-09) Sky (07-10)	L300 (04-05) Vue (04-09)	Outlook (07-09)	Relay (05-07)	S Series (96-99)
Scion				
tC (11)	xA (04-06)	xB (04-06,08-10)		
Subaru				
B9 Tribeca (06-07) Outback (00-11)	Baja (03-06) Tribeca (08-10)	Forester (01-12)	Impreza (01-11)	Legacy (99-10)

Suzuki

XL-7 (07-08)

Toyota

4Runner (00-11)	Avalon (00-11)	Camry (00-11)	Camry Solara (99-08)
Celica (00-05)	Corolla (03-11)	Echo (00-05)	FJ Cruiser (07-09)
Highlander (01-11)	Land Cruiser (98-07)	Matrix (03-11)	MR2 Spyder (00-04)
Prius (01-03)	RAV4 (01-12)	Sequoia (01-11)	Sienna (99-12)
Tacoma (02-11)	Tundra (03-11)	Venza (09-11)	Yaris (11-12)

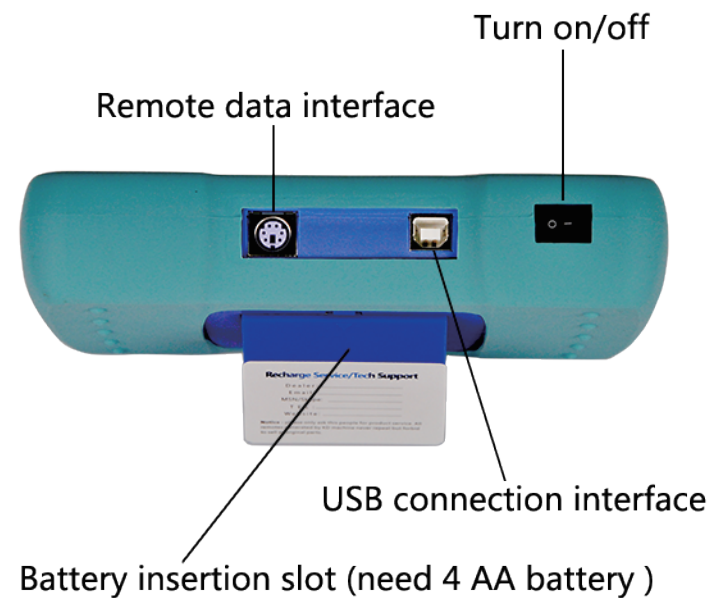
VW

98-13 BORA GOLF BEETLE EOS TIGUAN PASSAT
1J0 959 753 F /T/F/AM/DC
1K0 959 753 P/H
5K0 -----

— More remotes are being added —

Part 3

KD900 Device Operation



KD900 machine needs power to work , there are 4 ways to power KD900.

1: Use 4 AA battery



2: Connect to PC



3: Connect directly to power supply



4: Connect to portable power





Main menu instruction :
There are 6 items on the main menu as the picture showing .

1.Frequency test :

Accurate frequency test function. One of the few devices which can test Citroen & Peugeot frequency. Can distinguish ASK (Amplitude Shift Keying) and FSK (Frequency Shift Keying) modulation modes.



Press" OK" to start the function

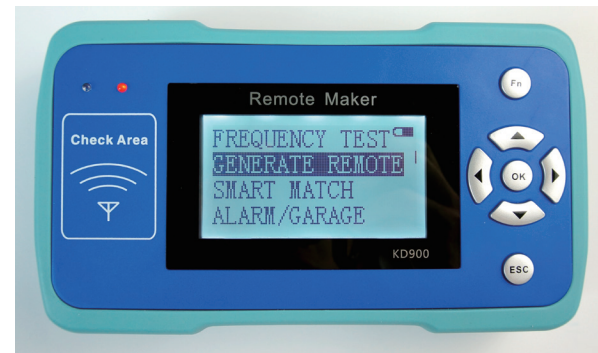


Put the remote on Check Area, then press any button of the remote, the frequency will be read by the machine and shown on the screen.

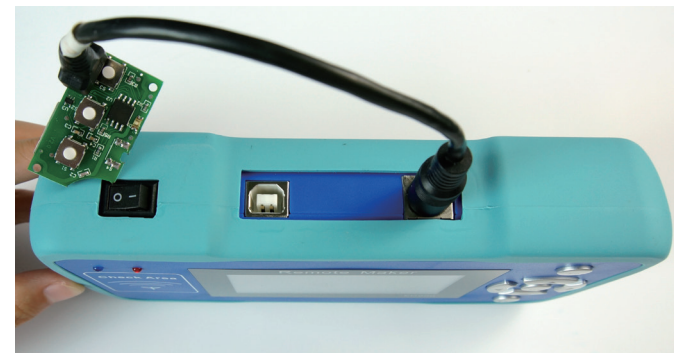


2.GENERATE REMOTE :

(Remote/RKE): More than about 200 types of transmitters can be generated, for example Toyota, BMW, VW, Audi, Nissan, Hyundai, Kia, Subaru, Mazda, Ford, Honda and many other brands. Codes of KEYDIY remotes are never repeated. Produces extremely stable transmitters with an excellent operating range.



(1) Select "GENERATE REMOTE" on the main menu



(2) Connect remote to machine with the remote data cable, please be sure that the remote is without battery.



(3) Press "OK" to the car brand list , choose the car brand you need.



(4) Press "OK" to enter the car remote list, and select the remote you want to make



(5) Press" OK" to check the remote information, you can check the frequency and cost on the screen and also the remote detail.



(6) Press OK to enter the remote make screen , there are 6 selections on the screen.



SIMULATE REMOTE-- SIMULATE REMOTE is a function to make remote, in order to check whether the remote is works well or not, it won' t cost any tokens , but the remote can only use 50 times. During these times you can try to program the remote to the car to check whether you choose the suitable remote.

SIMULATE DEVICE-- SIMULATE DEVICE is a function to make the device work as a remote, check whether the remote is works well or not, it won' t cost any tokens , you can try to program the device to car same as program remote to test.



VERIFY REMOTE – to check the remote information , if you have original remote ,please put it on CHEAK AREA, and press any button to see whether you choose the correct remote.

MAKE REMOTE — to make a remote directly, will cost tokens, and then program the remote to the car same way as a original remote, you can use all the time.

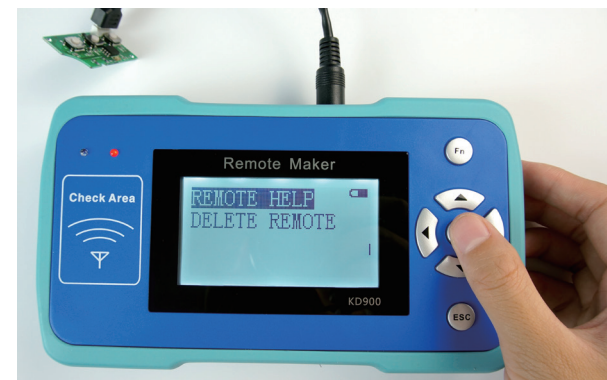
Pictures of transponders and other machines:



Please note:

We only make remote, after that, you should put the remote and transponder(4D 4C 46 48 8E or some other transponders) together and use a third party tool to program both remote and transponder to the car ,we suggest using MVP or Zedbull to program remotes, some remotes can be programmed to the car manually.

If you simulated remote and program to the car before creating it, do not need to program it again.



REMOTE HELP – To check the detail information of the remote.

DELETE REMOTE – to delete the remote from machine , if you do not need or do not want to find this remote in the machine you can delete it , but when you update on line ,it will come back to the machine.



Press OK



Choose YES to delete this remote , choose NO back to the menu

(7) MAKE REMOTE



Choose "MAKE REMOTE" and press "OK" the screen will show Successful and how many tokens will cost , and how many tokens left in the machine

We strongly suggest "SIMULATE REMOTE" before "MAKE REMOTE" . Select "SIMULATE REMOTE" and press OK, then will be successful, we can check the simulated remote' s frequency to see whether it works well or not.

3.Smart Match(Developing):



(1) Choose the "SMART MATCH" on the main menu



(2) Press "OK" to start the function
Put the remote on Check Area.

(3) Press any button of the remote, the machine will search the remote for you. If successful the screen will show the corresponding part number for your choose , if cannot find the screen will show Not Supported.(The searched result is not 100% correct, it's only for reference.)



(Please note: only support ASK modulation modes at present.)

4.ALARM/GARAGE:

(1)How to COPY/MAKE NEW a remote for garage ?

Can only copy simple garage remote and all fixed code remotes with 300-500MHZ frequency.



Select "ALARM/GARAGE" on the main menu



Connect the KD remote to the KD900



Press "OK" button



Press "OK" to check the DISCLAIMER



Press "OK" to start



Put the original garage remote on CHECK ARE



Press the original remote's button, the screen will ask you "Press OK to next"



Press OK button as the screen asked. Then the screen will show you the step.



Press the original' s garage remote button

Press OK button

Press OK to next step

Press OK



Press OK to next step



Press OK

Press OK

If the original remote is rolling code, the screen will show "COPY" and "MAKE NEW" to choose.



COPY- -is to copy a same ID remote as the original, if it's fixed code, it can be used directly after being copied, and both the copy remote and the copied remote can work at the same time. If it's rolling code, should program to the garage, and only one remote(copy one or copy one) can work.



MAKE NEW—is to make a new ID remote, after successful made, should program it to the garage. Both the new remote and the copied remote can work.



SIMULATE REMOTE-- SIMULATE REMOTE is a function for making remote to check whether the remote works well or not, it won't cost any tokens, but the remote can only use 50 times. During these times you can try to program the remote to the garage to check whether it works well or not.



MAKE REMOTE — to make a remote directly, It will cost tokens, and then you can program it to the garage, can use all the time.



Select to MAKE REMOTE

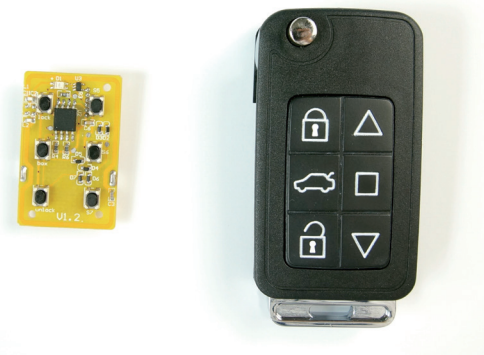


Press OK

How to make a car&garage in one remote?



First should choose our F style remotes



The left 3 buttons of the remote are for controlling auto and right 3 buttons are for controlling garage door.



Connect the remote to KD900, please make the auto remote first, and be sure the remote is without battery.



Select "GENERATE REMOTE" on the main menu.

Press OK to enter car brand list



Choose the car brand you need, and press OK to the remote part No. list



Choose the corresponding part No.



Press OK



Press OK



Choose "MAKE REMOTE"



Press OK, and make remote successfully, let's go to next step make/copy garage remote.



Press "ESC" button to main menu, and choose ALARM/GARAGE



Press OK



Press "OK" button, to check the DISCLAIMER



Press "OK" button to start



Put the original garage remote on CHECK ARE



Press the original remote's button, the screen will show you "Press OK to next"



Press OK button as the screen requests.
Then the screen will change to



Press the original garage remote's
button as the screen requests.



Press OK button



Press OK button



Press OK button



Press OK button



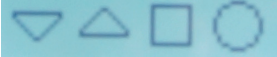

Press OK to choose COPY or MAKE NEW



Press OK to choose MAKE REMOTE

Press OK to



Use down button to choose  , must choose here to make the garage remote, if you choose  the generated auto remote will be covered , so please be careful at this step!

Press OK



Now this remote is generated successfully ,you can program it to car and garage !

OTHER FUNCTION



(1) Select "OTHER FUNCTION" on the main menu, Press OK . There are 4 functions

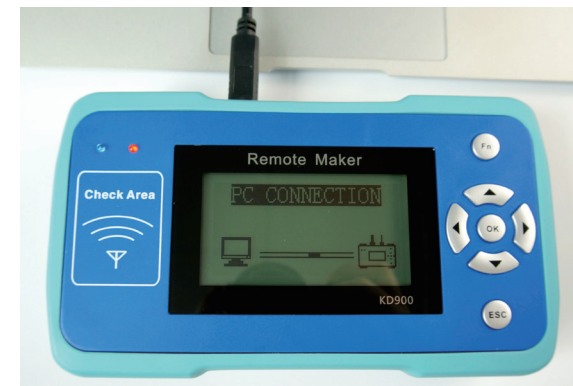
NOT CONNECTED



(2) PC CONNECTIONG

To check whether the machine is connected to PC software.

CONNECTED



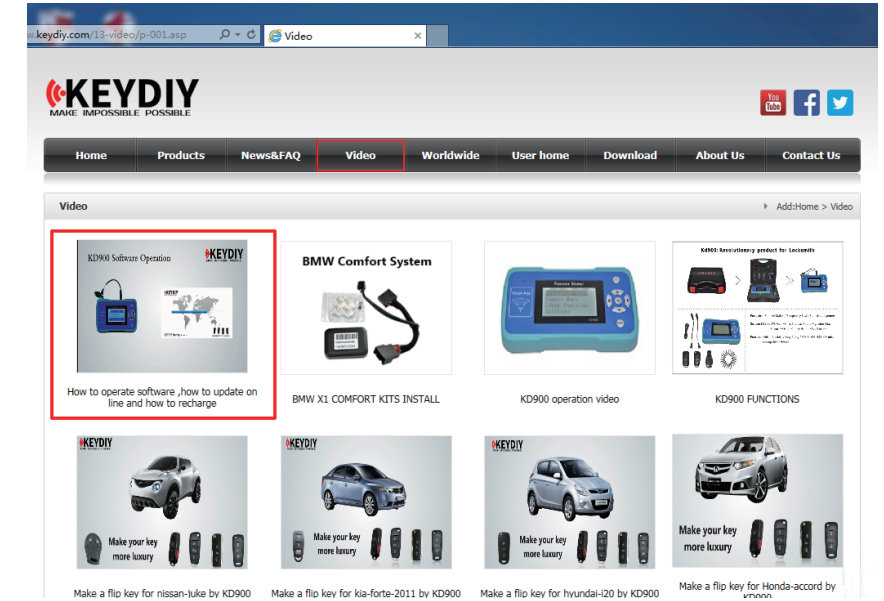


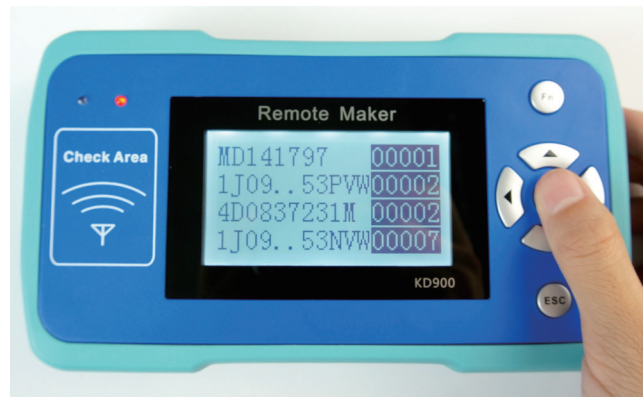
(3) "SYSTEM INFO" Choose SYSTEM INFO and press OK to check the machine details, you can see the SID, VER, LANGUAGE, TOKENS, and SERIAL NO. of the machine, also with the dealer's information!



(4) RECHARGE:(We suggest to recharge on software but not on device for it will be more convenient to operate on software.)

Each machine has 1000 tokens inside, after running out please contact local dealer!
How to recharge please check the video on www.keydiy.com





(5) HISTORY:

Choose HISTORY and press OK to enter history record menu, you will find the remotes you generated and how many times you generated.

SETTINGS



(1) Choose SETTINGS on the main menu, and press OK, there are four items on the menu.



KEYPAD TONE

Select KEYPAD TONE on the menu, press OK, you can adjust the tone by right and left button.



BRIGHTNESS

Select BRIGHTNESS on the menu, press OK, you can adjust the brightness by right and left button.



GREYSCALE

Select GREYSCALE on the menu, press OK, you can adjust the brightness by right and left button.



BATTERY :

choose BATTERY and press OK, then you can check the power volt

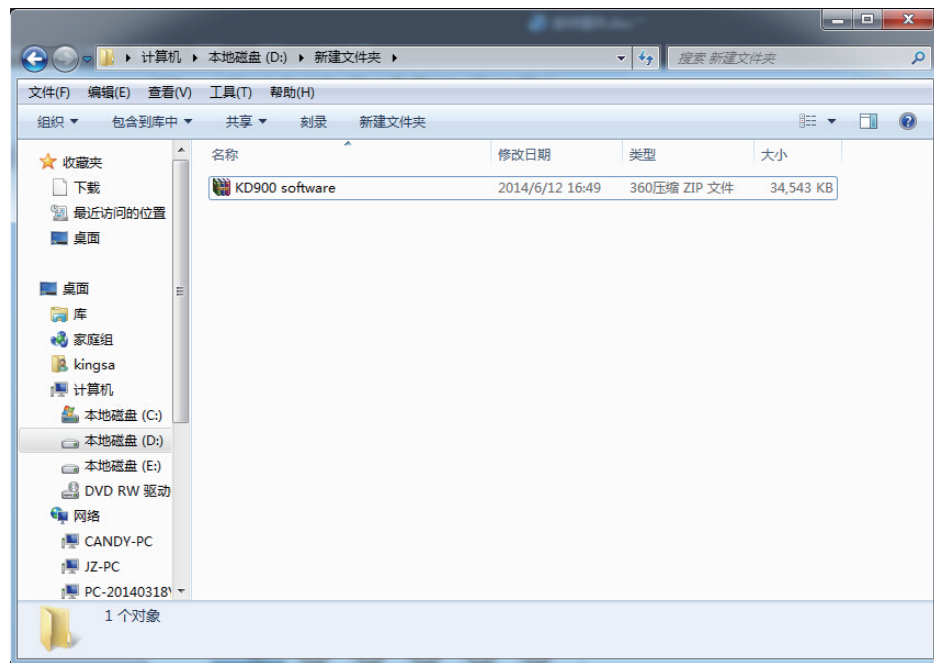
LANGUAGE:(Developing)



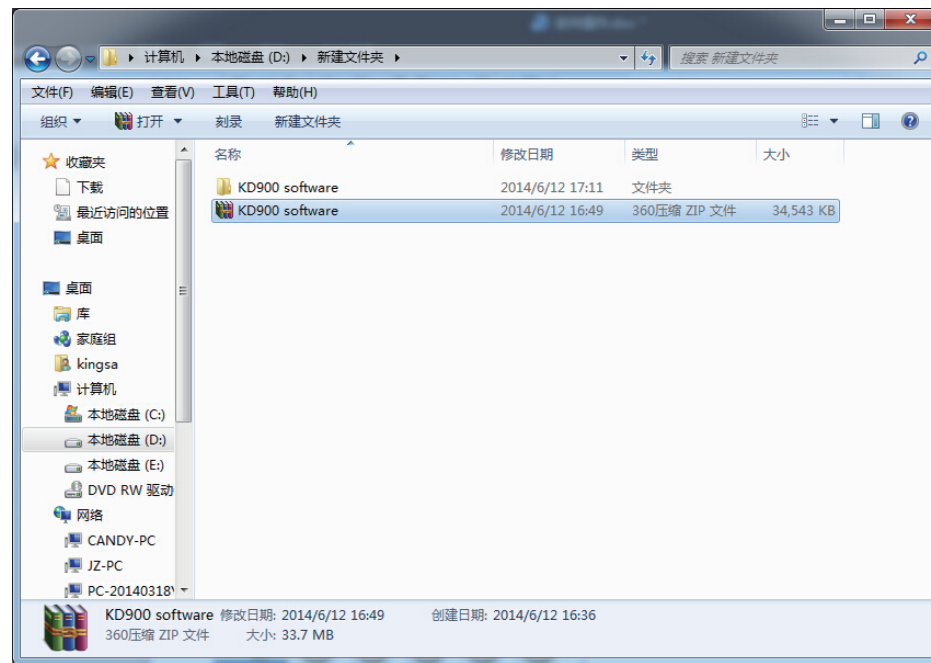
In the future we will add language selection functions,
the user can set the language they want!

Part 4 KD900 Software Operation

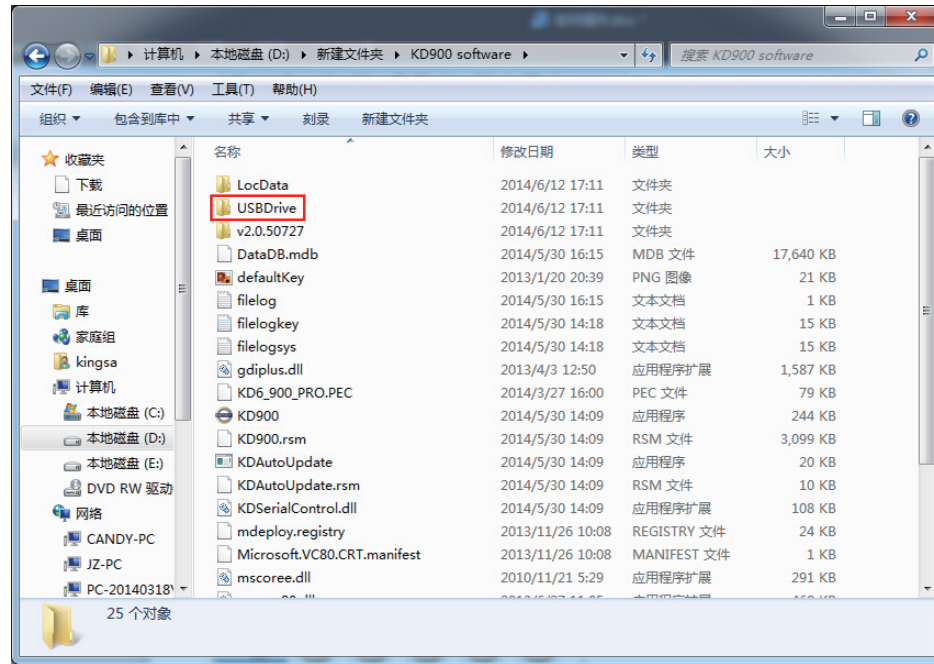
1. Driver Install



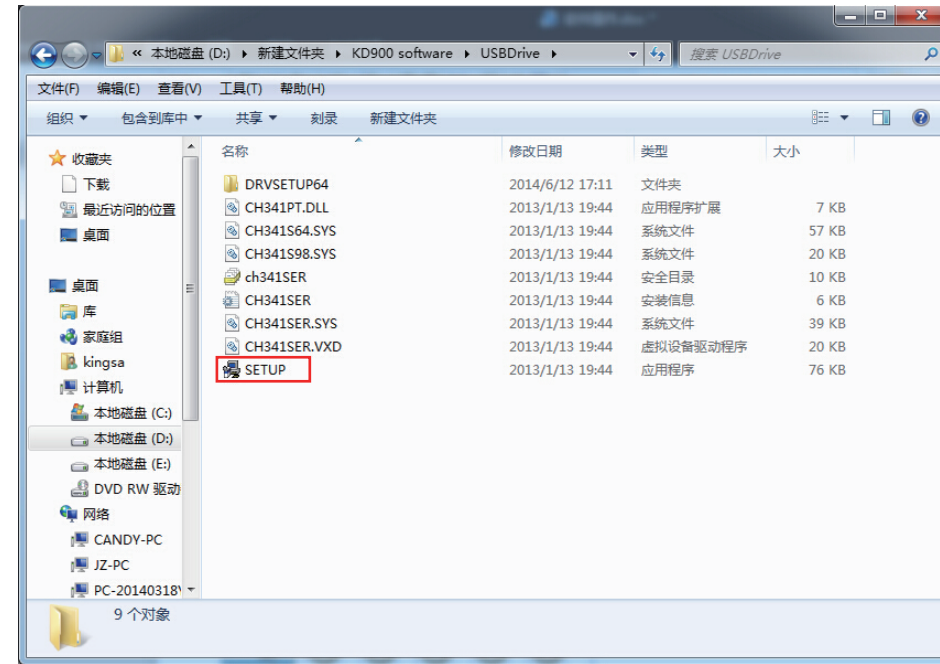
Download the software from our website: <http://www.keydiy.com> or copy from USB stick.



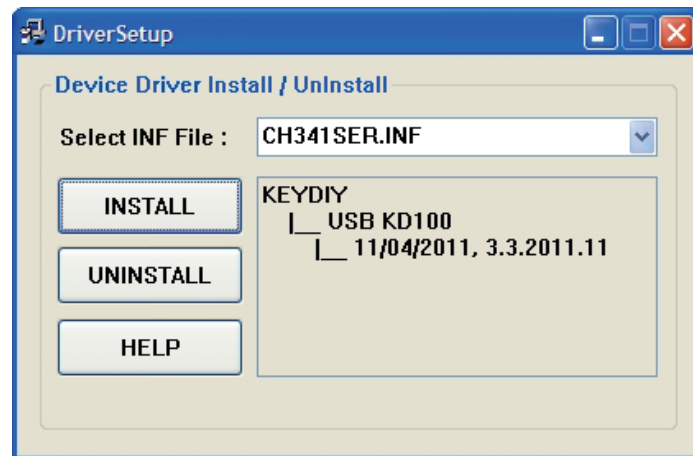
Unzip the file. (Connect the KD900 to your PC, it may remind you to install the KD900 USBDriver, if not, just install it manually)



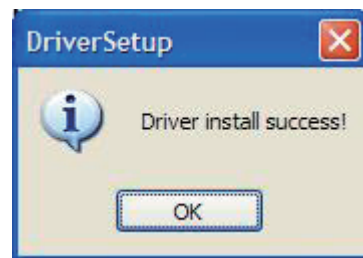
Open the KD900 file then you will see the USBDrive file.



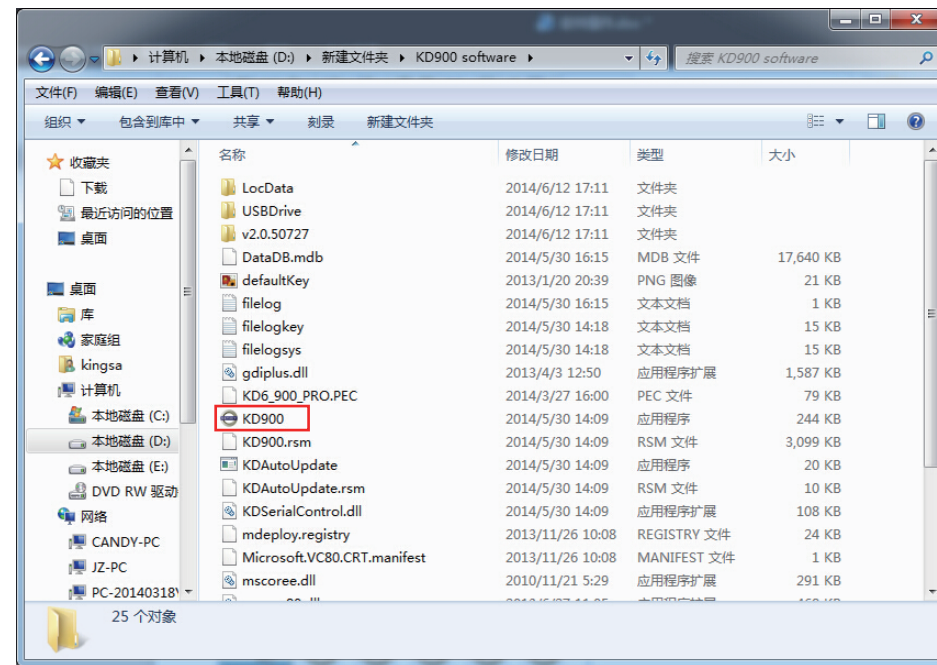
Open USBDrive file and click SETUP.



Click Install, then wait for minutes.



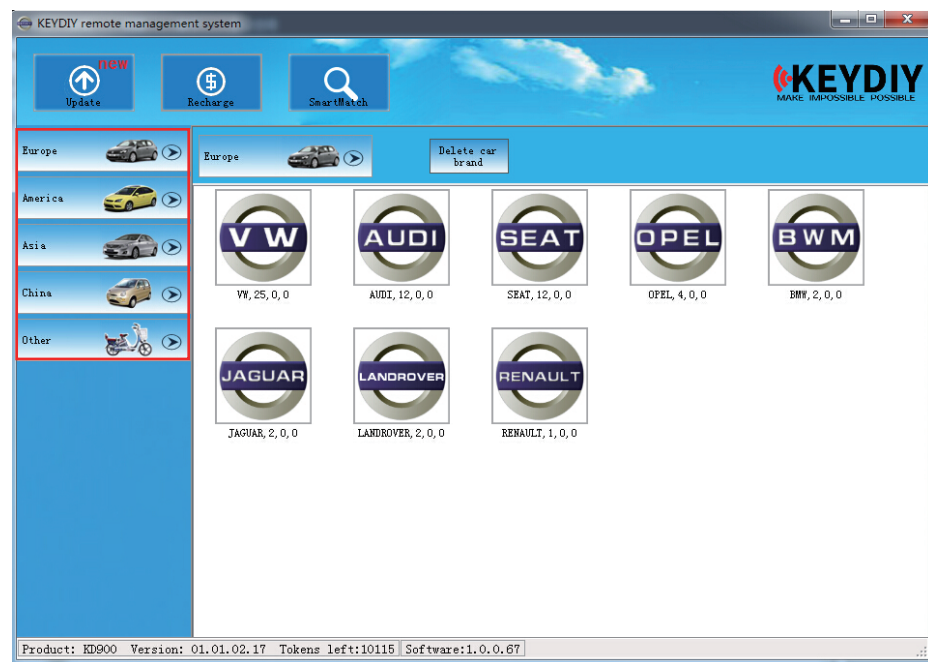
When finished, click OK. Installation done, you can operate the software now.



Find the KD900.exe in the KD900 file. Start to work KD900.

2. Make Remote

Our remotes are distinguished by area.



Choose the Area. (Europe for example)

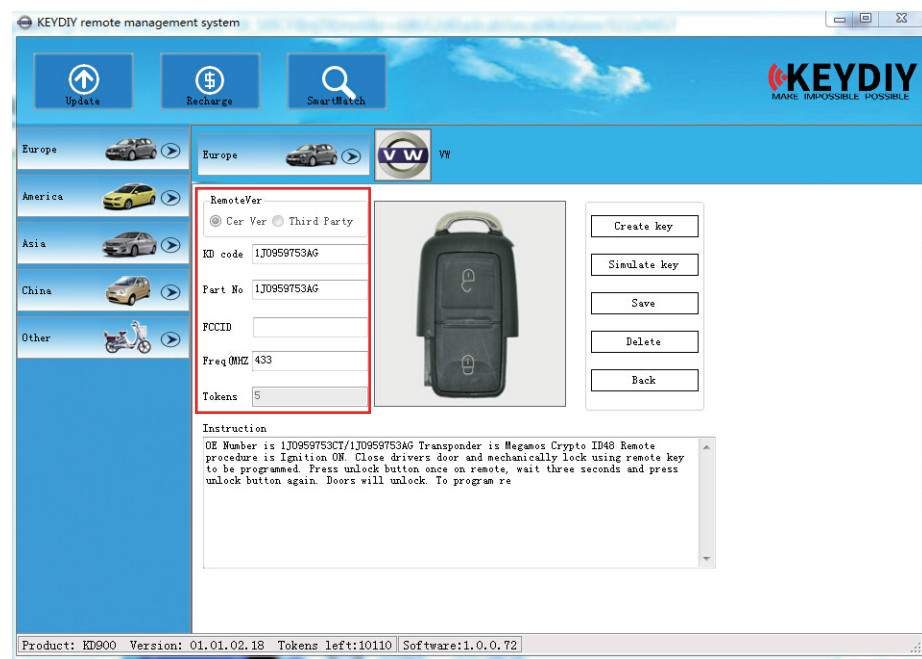


Then choose the car brand.

Choose the remote to create.

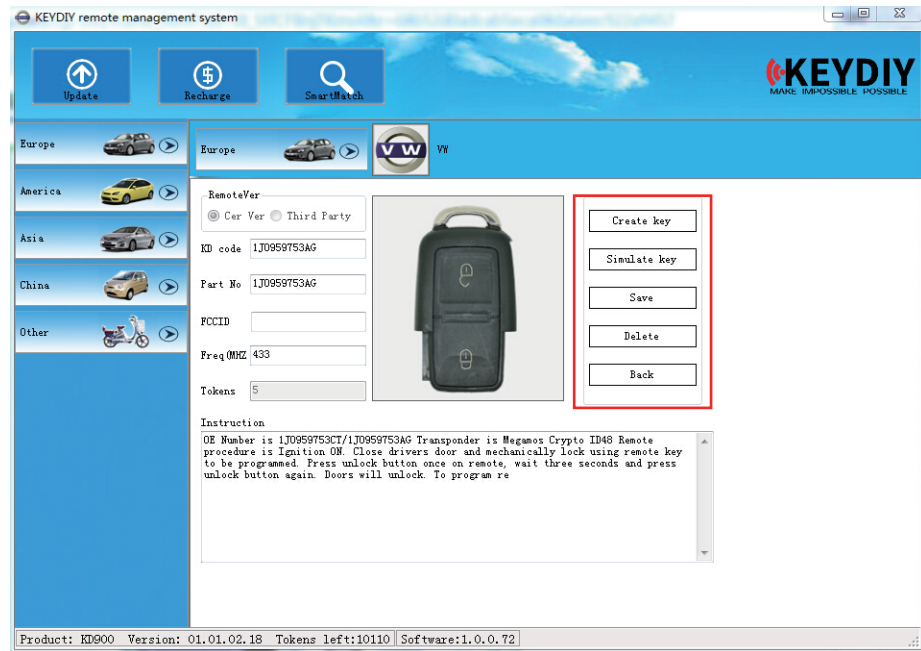


In the remotes choosing site, you can see part number and picture, if can't find part number you can find picture of the remotes you want.

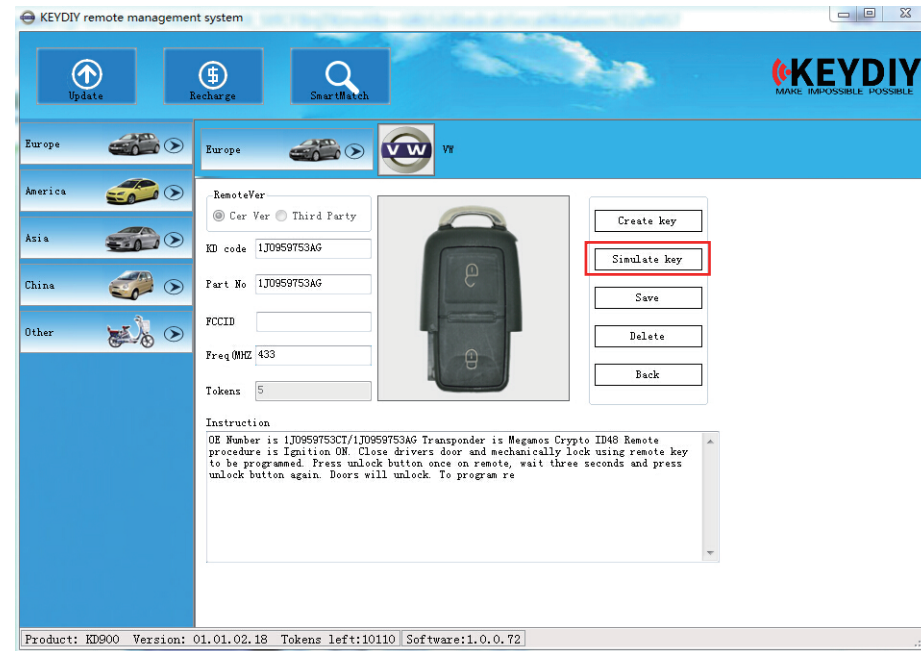


On the left of the remote site, it will show you part number, frequency, tokens cost and other information.

Simulate Key first to test.

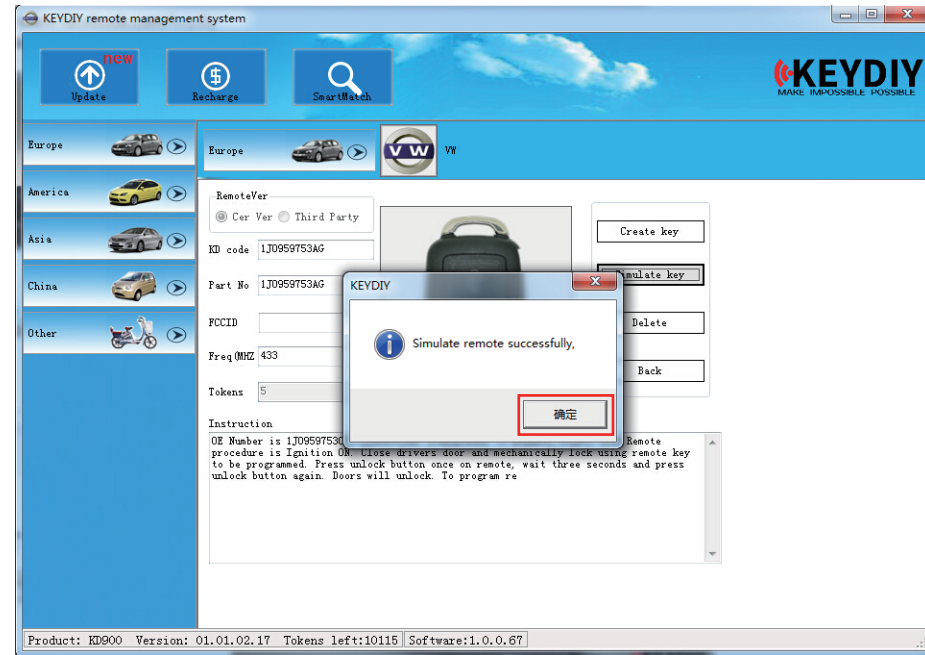


On the right are function buttons(Create Key, Simulate Key, Save, Back)

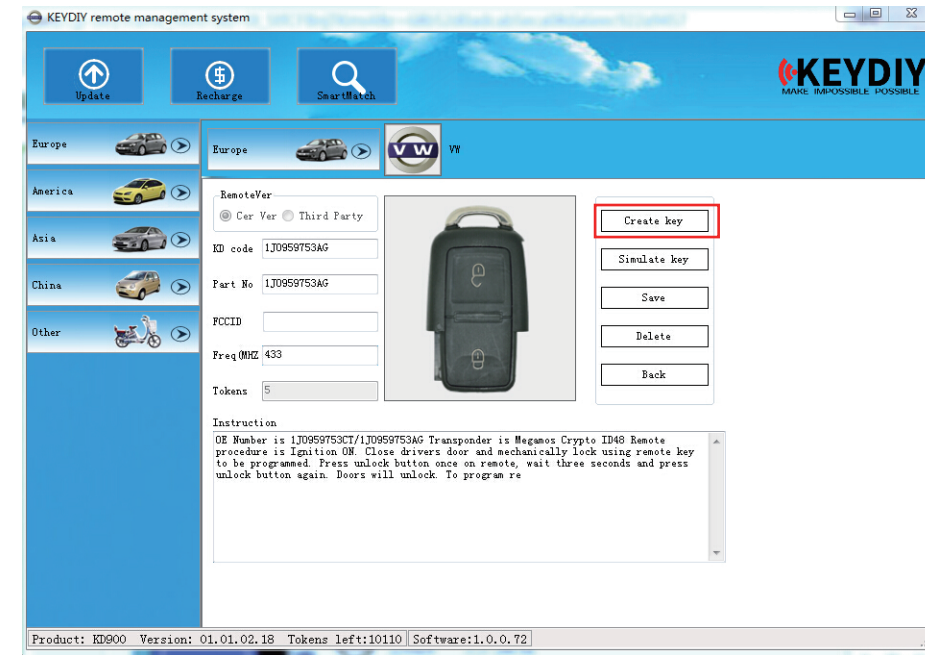


Please do not choose to create key when you are not sure whether it works for it will cost tokens. Simulate key first, it won't cost any tokens, but can only work 30-50 times.

Program the remote to car after simulating, if remote works, then you can create key, thus can save tokens.(simulating key do not cost tokens, but simulated key can only work 30-50 times.)

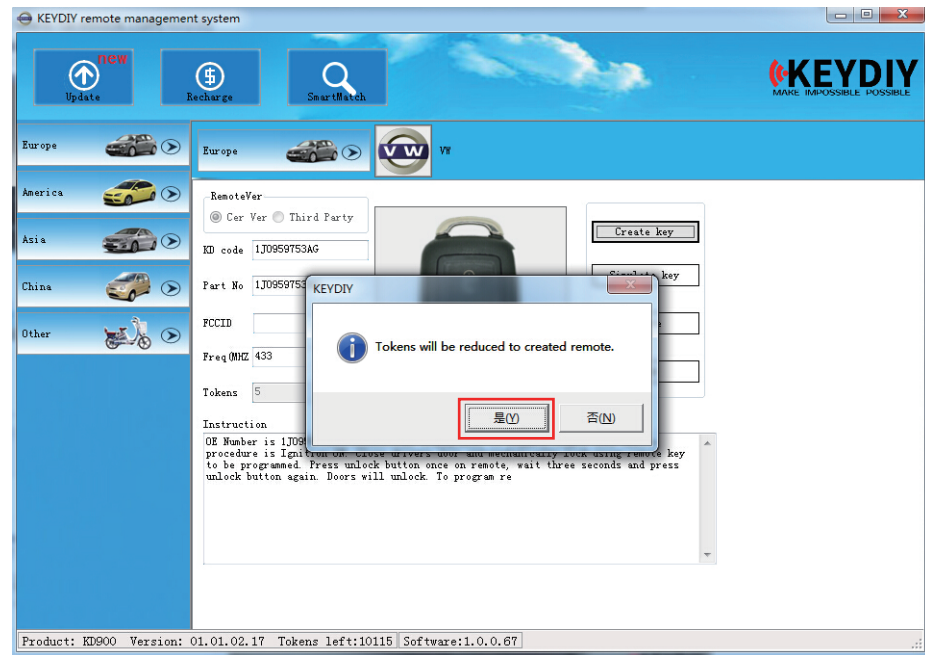


When simulate successful, click the OK button.

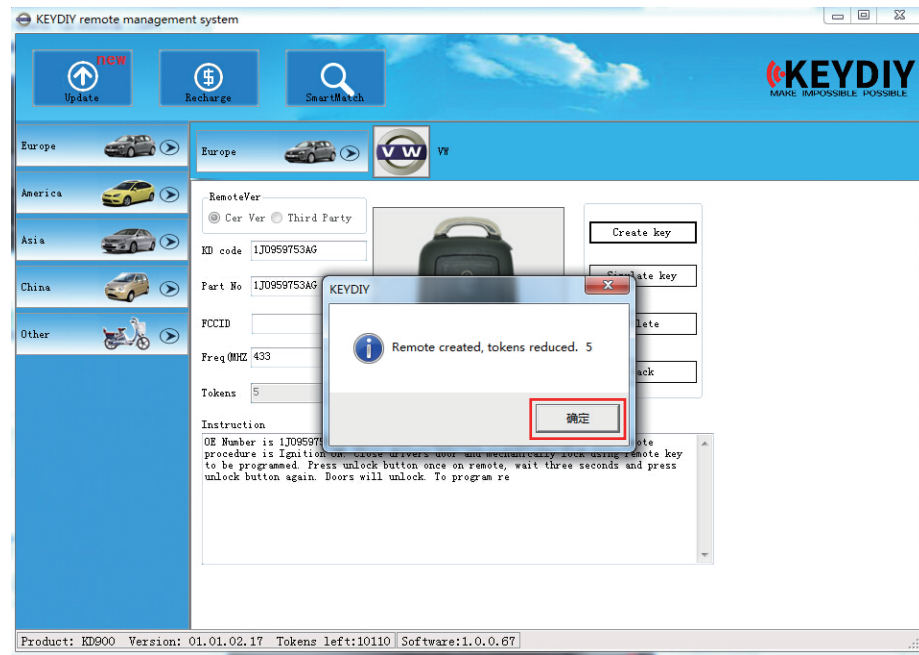


Create key after testing.

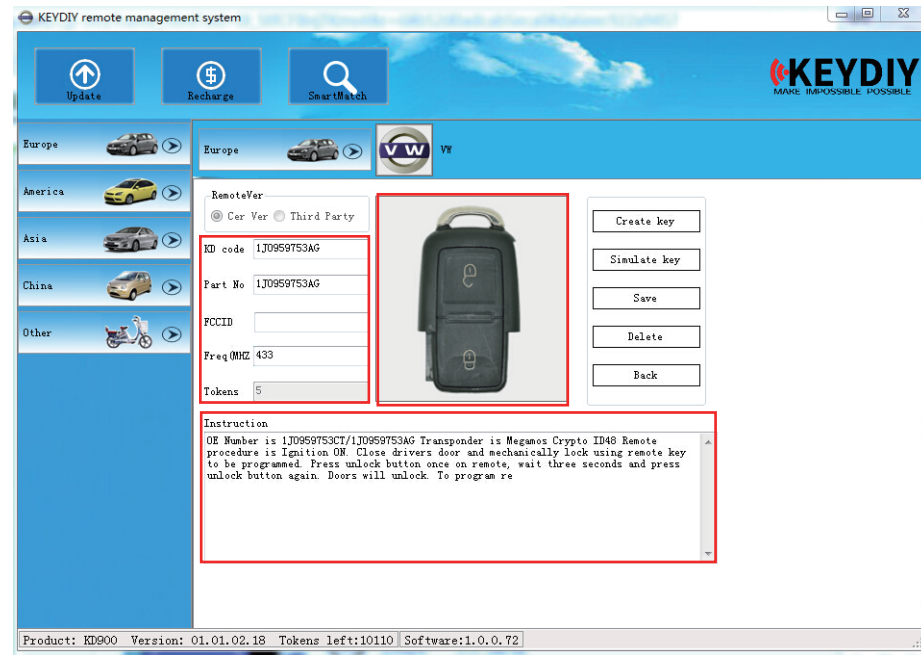
Key is created, click the OK button.



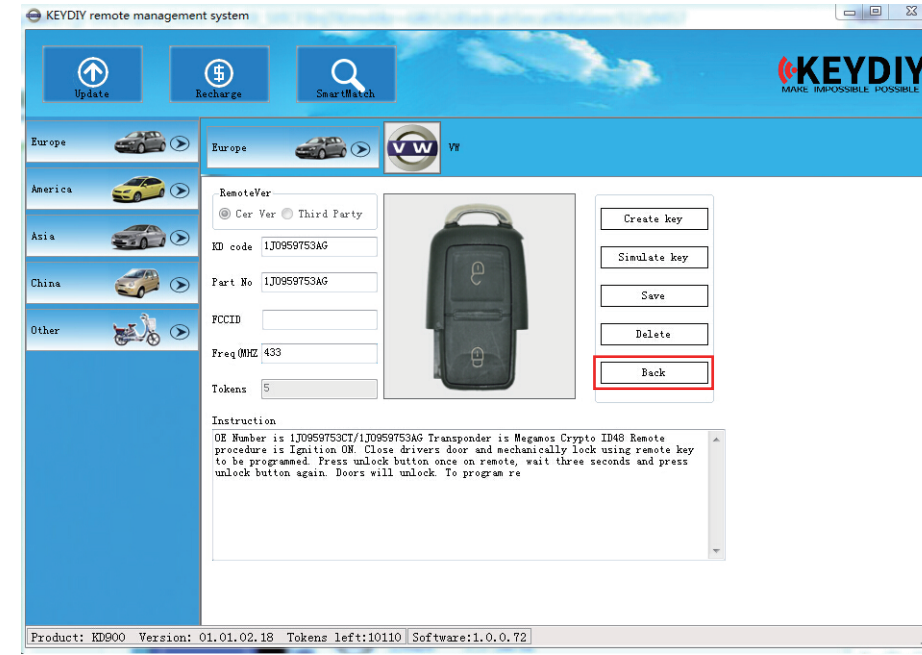
Click the YES button.



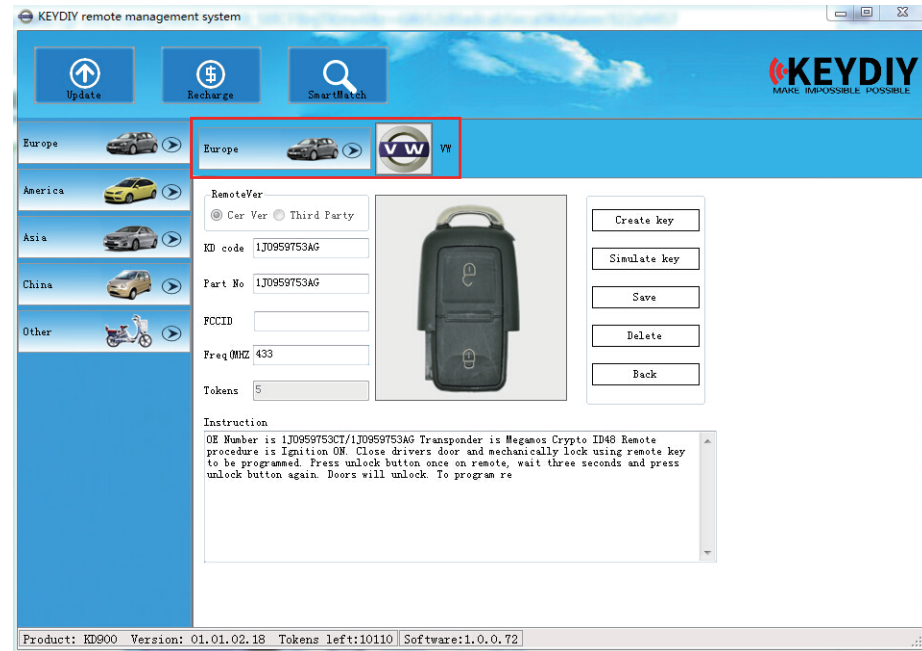
Remote does not need to be programmed again if has been programmed after simulated.



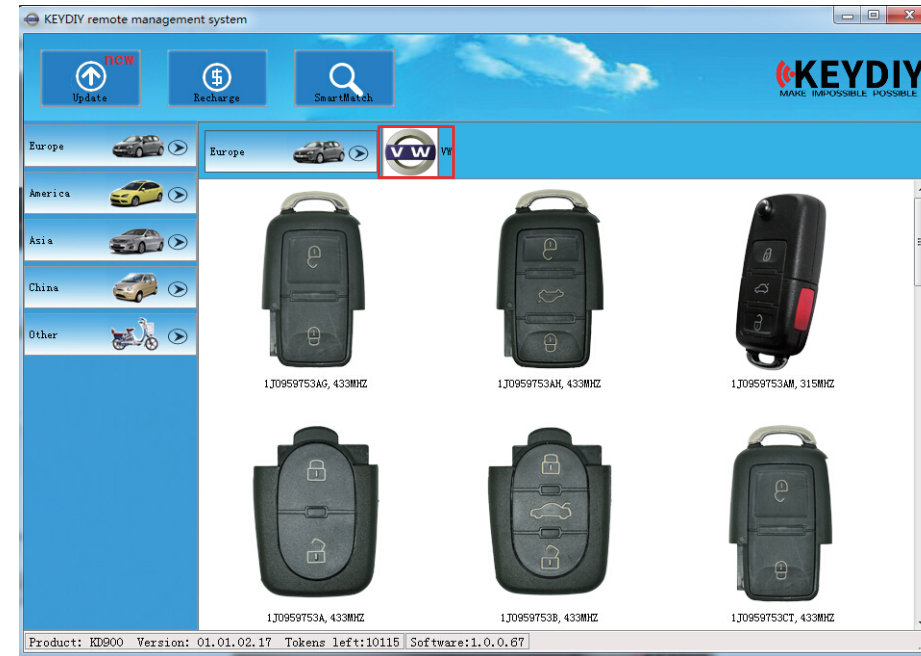
In this site, you can modify or add information in the forms with white under, click Save button, information will be saved to your PC software.
(You can add detail remote information to description form)



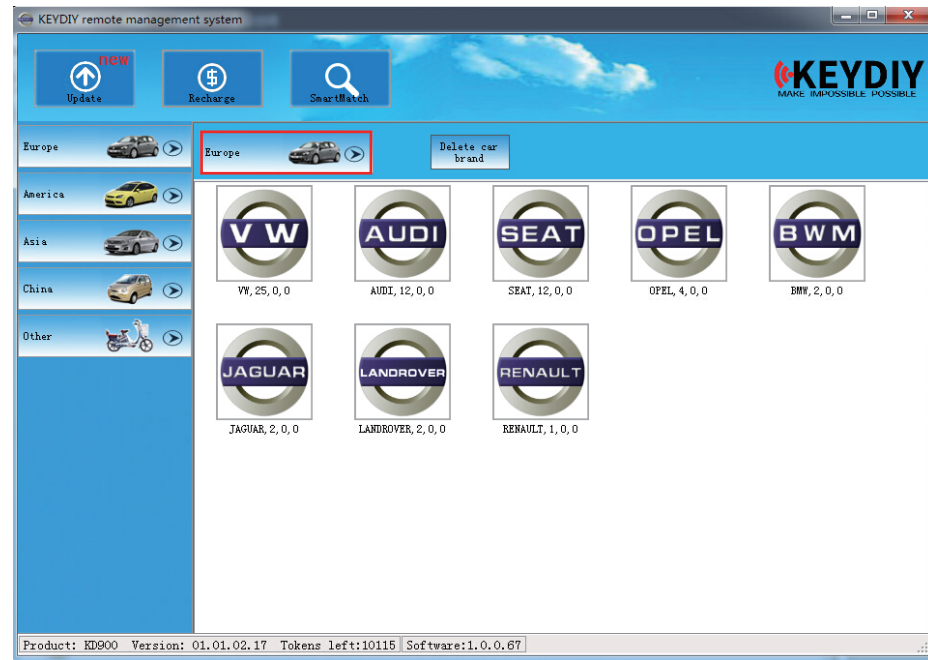
When click back button, you will be back to the brands choosing site.



Or you can click the choosing result button.

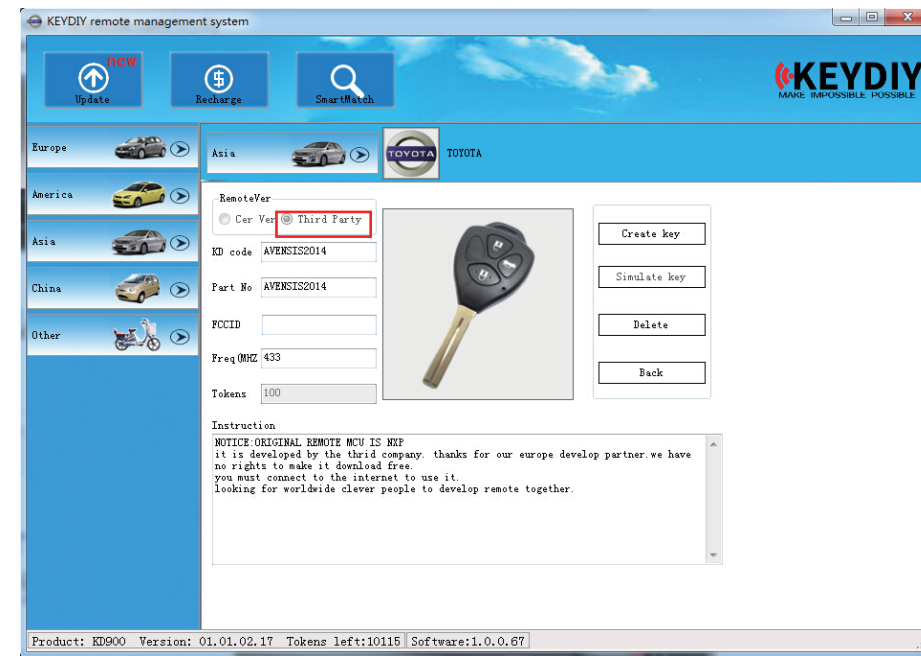


If you click the brand button, it will be back to the brand choose site.

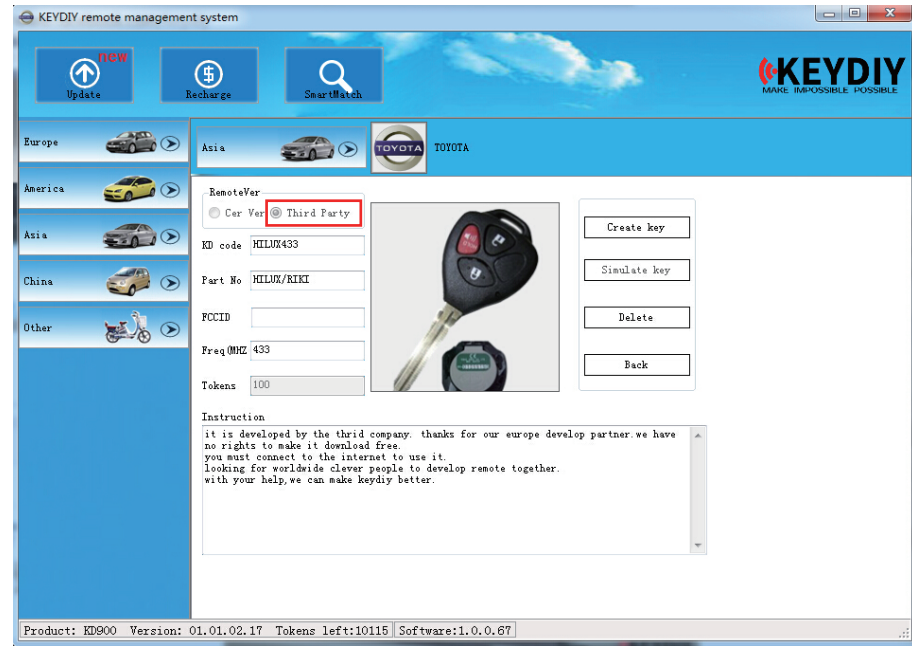


If you click the Area button, it will be back to the area you choose.

There are some remotes in our software developed by third party companies. These remotes will only be shown in pc software and can not be downloaded to KD900 device.



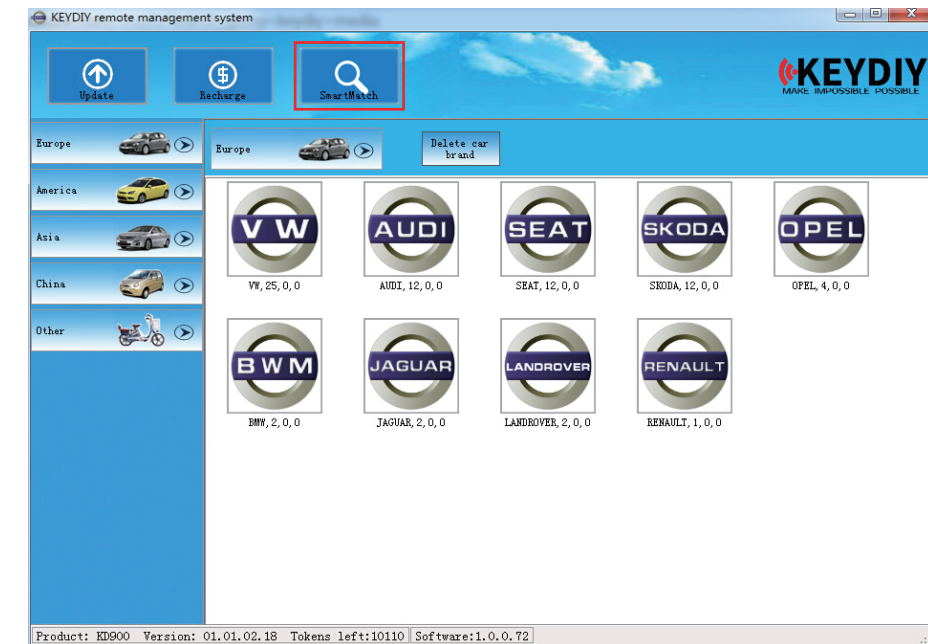
If you want to make these remotes, please use software. Third party remotes do not support simulating key for technical limit. Please check the frequency, picture and introduction information before creating it.



When using these third party remote, you can only create it but can't simulate. And these remotes cost 100 tokens.

3. Smart Match

Sometimes you may not sure which remote to choose to generate to the remote you want.



The Smart Match function will help you. Click the SmartMatch button.

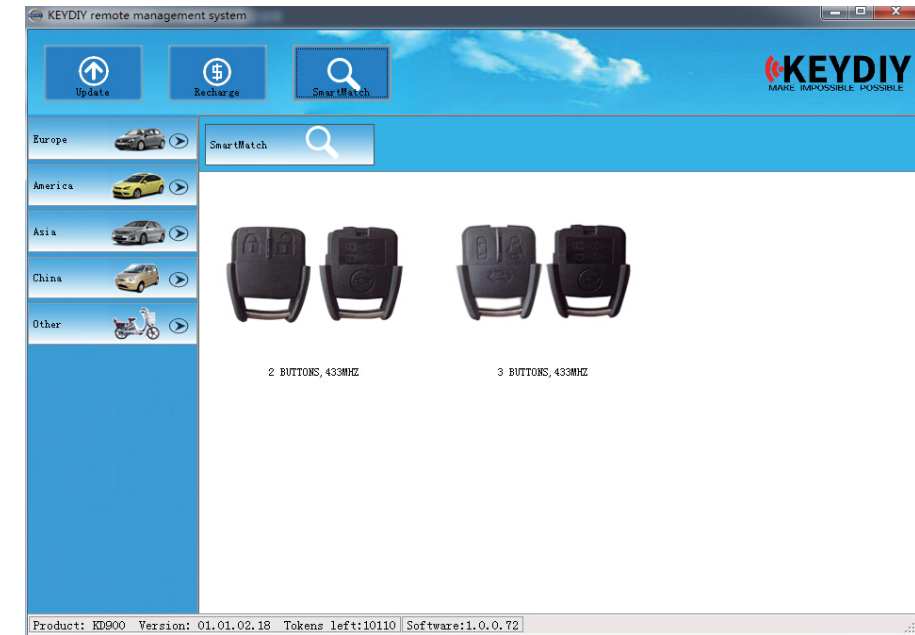


Enter the SmartMatch site.
If the Cancel button is gray, waiting for a while.



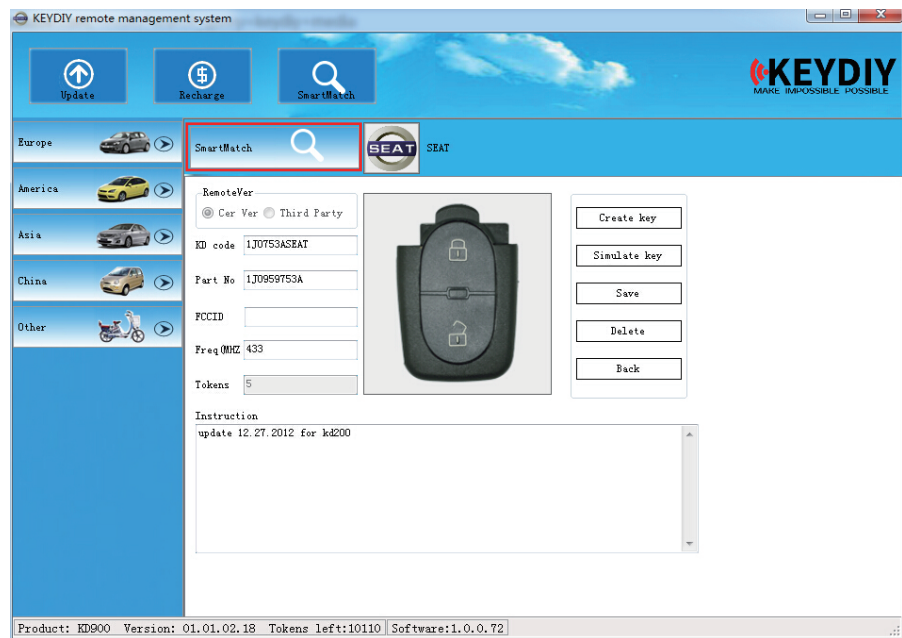
Then when it becomes to this, it will work.

Choose the remote you want then simulate it to test.
If you are sure it's the remote you want, you can create it directly.

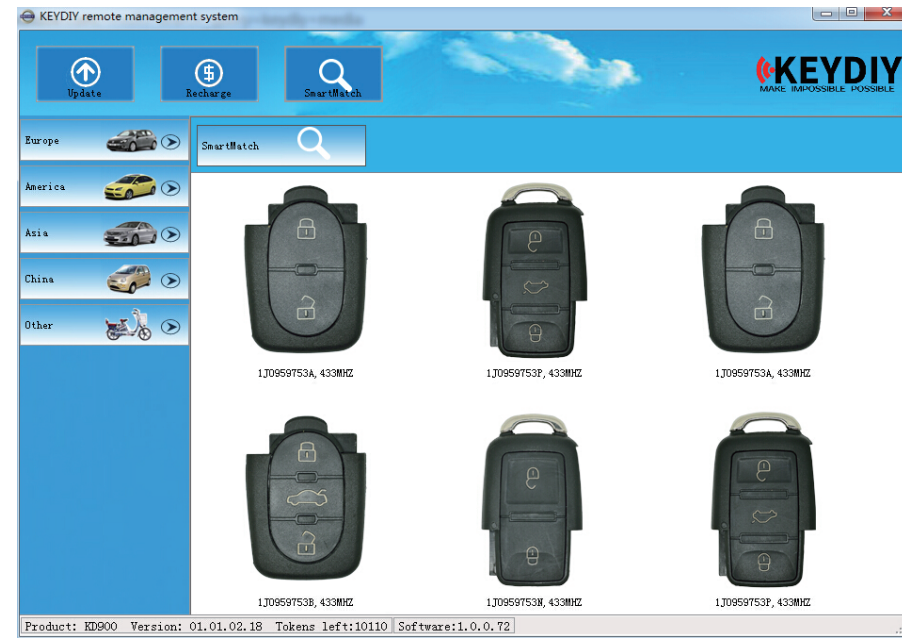


Put the remote you want to make on the Check Area, and press any button.
The software site will be switched, it will show you the remotes that may work for the one you want.

Thus you can easily find the remote you want. If not sure which one is the remote you want, try the remotes which the SmartMatch function find for you until you get the right one you want. (Some times it may show you several remotes, sometimes maybe only 1 or 2 remotes.)



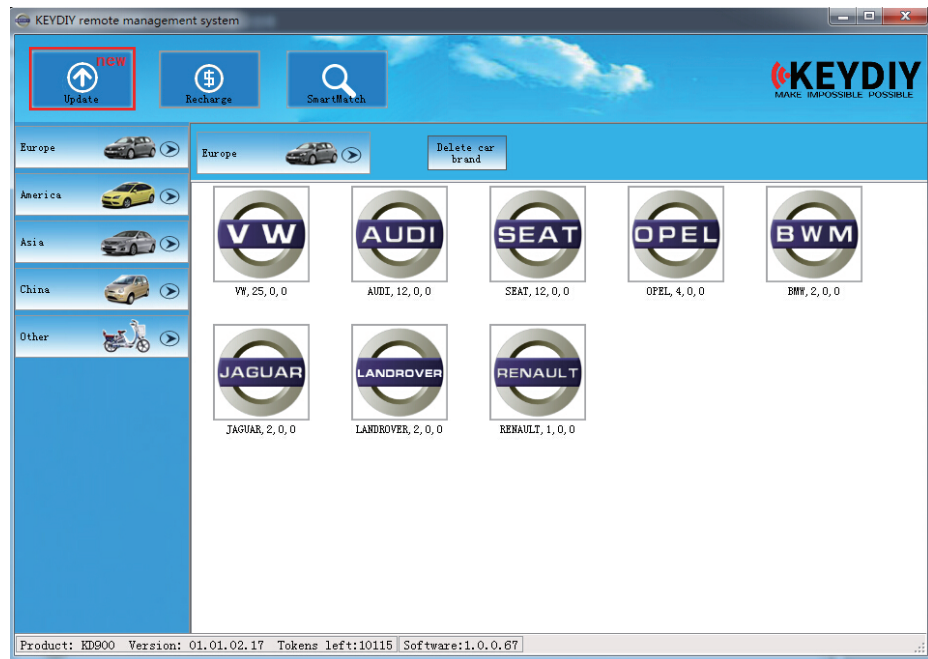
If you try 1 remote and it's not the one you want, you need to back to the SmartMatch result site, click the SmartMatch result button.



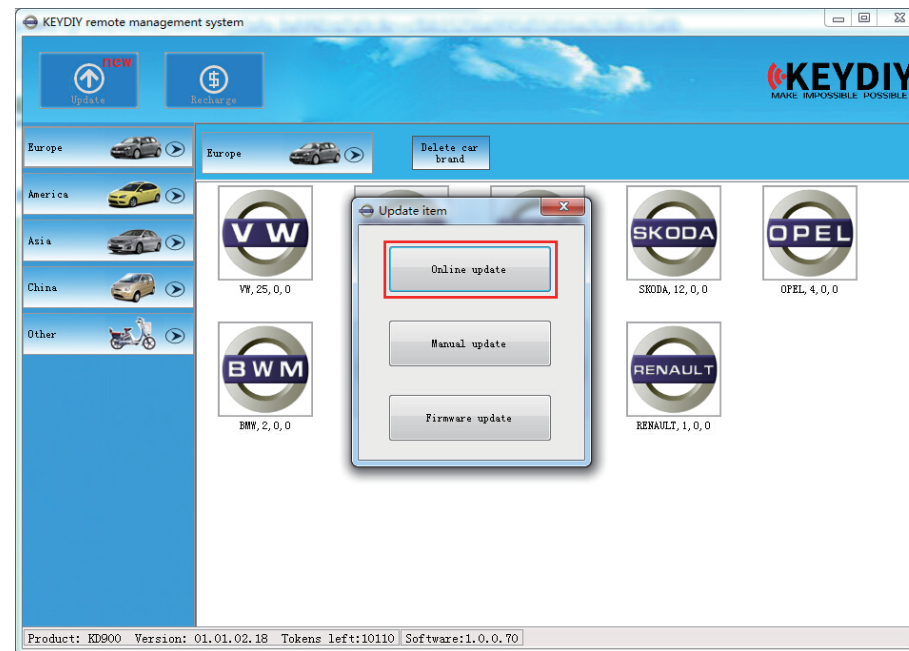
You will be back to the site you ever see before.

4. Update

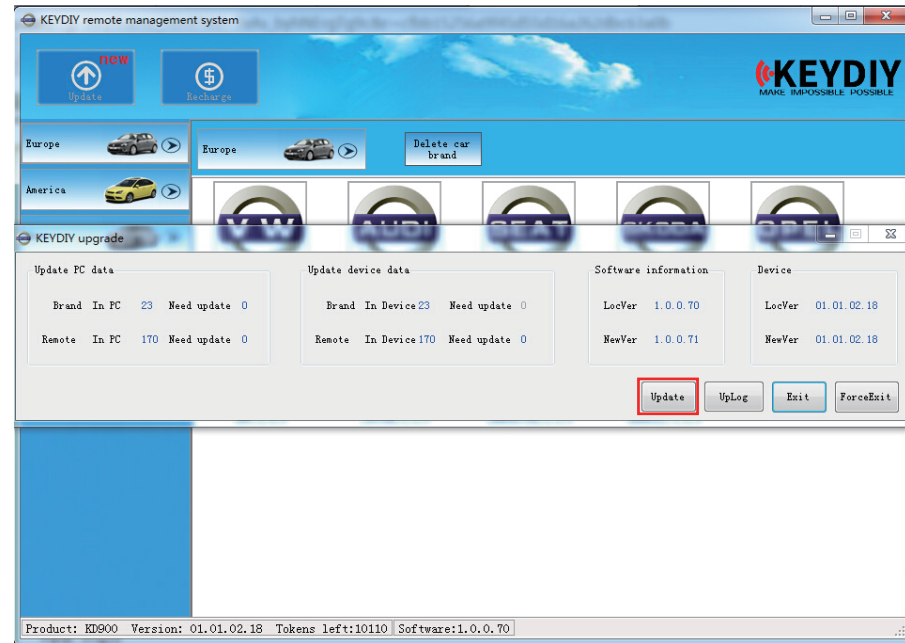
Click the Update button.



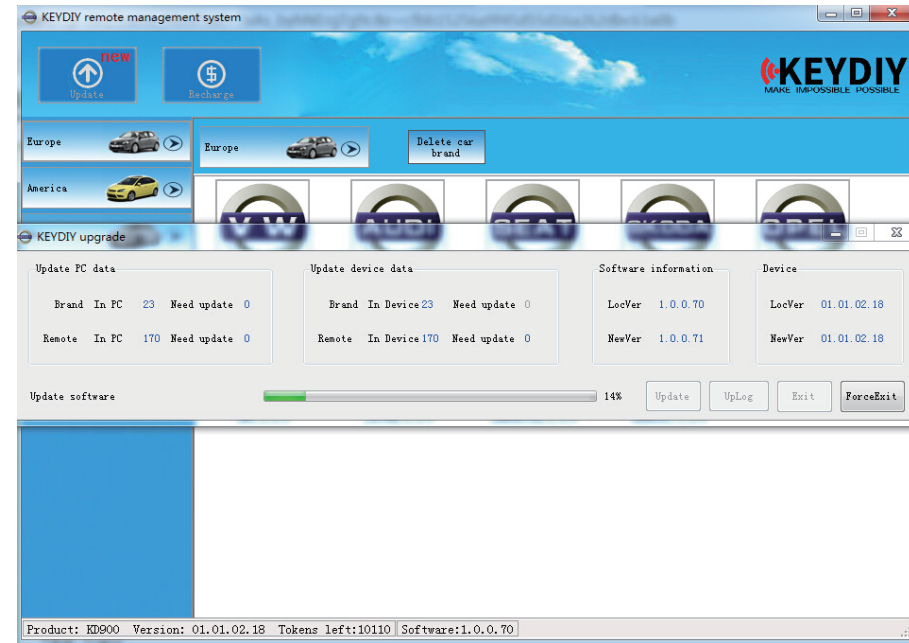
Where there are new for updating, it will be showed on the top left with 'new' in red.
(Software version, Firmware version or new remotes)



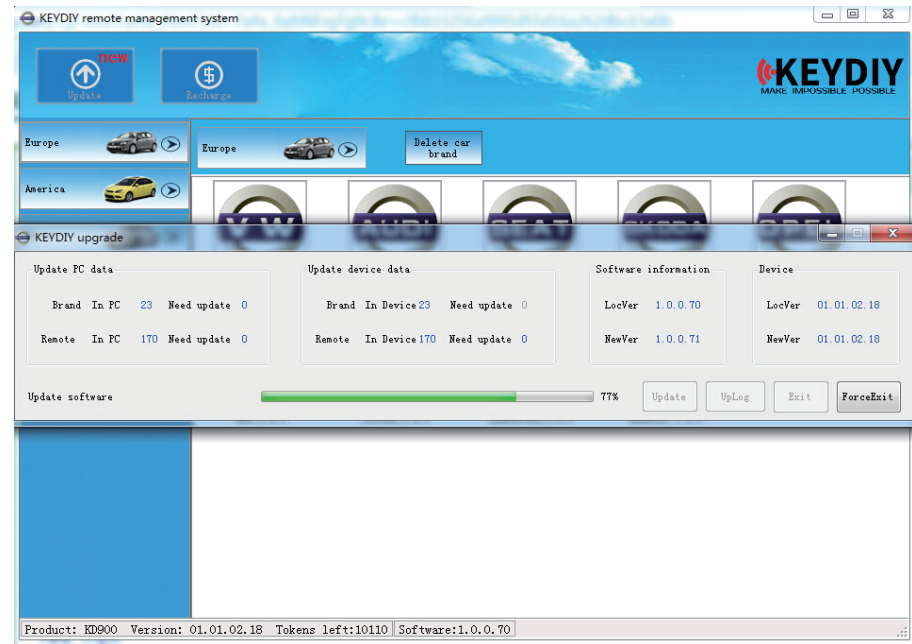
Click the Online Update button.



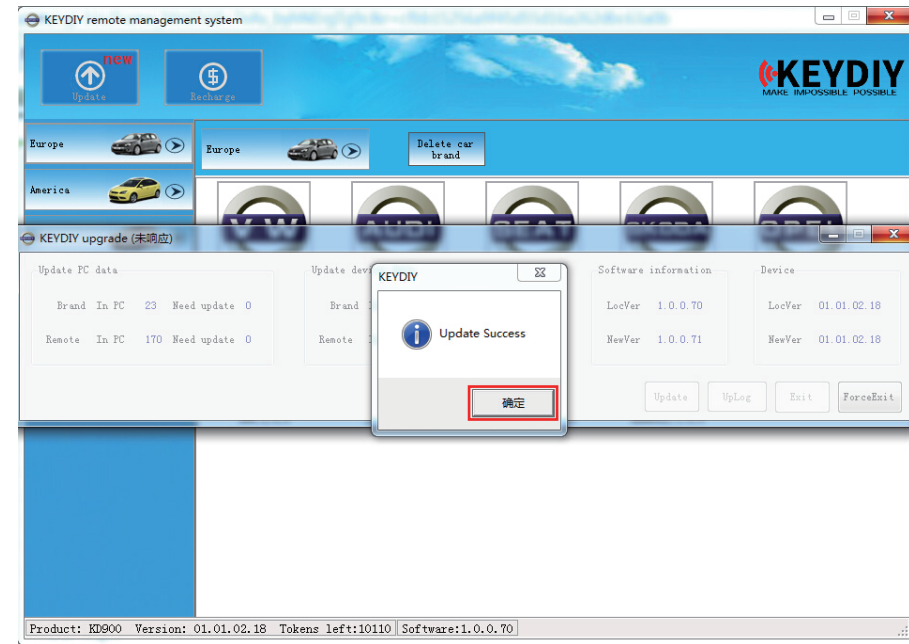
Click Update button.



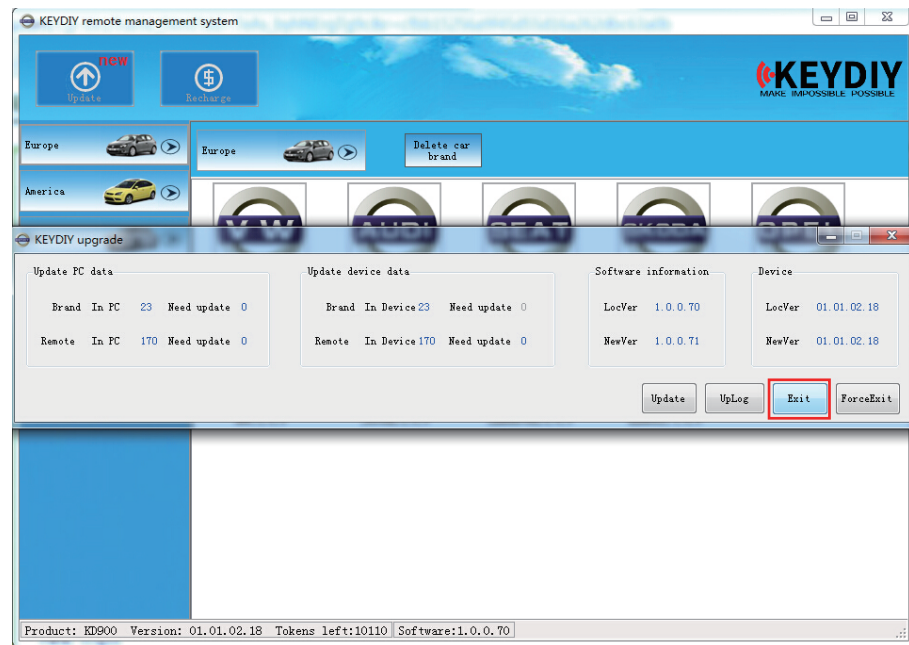
It will start to update.



Wait for minutes.

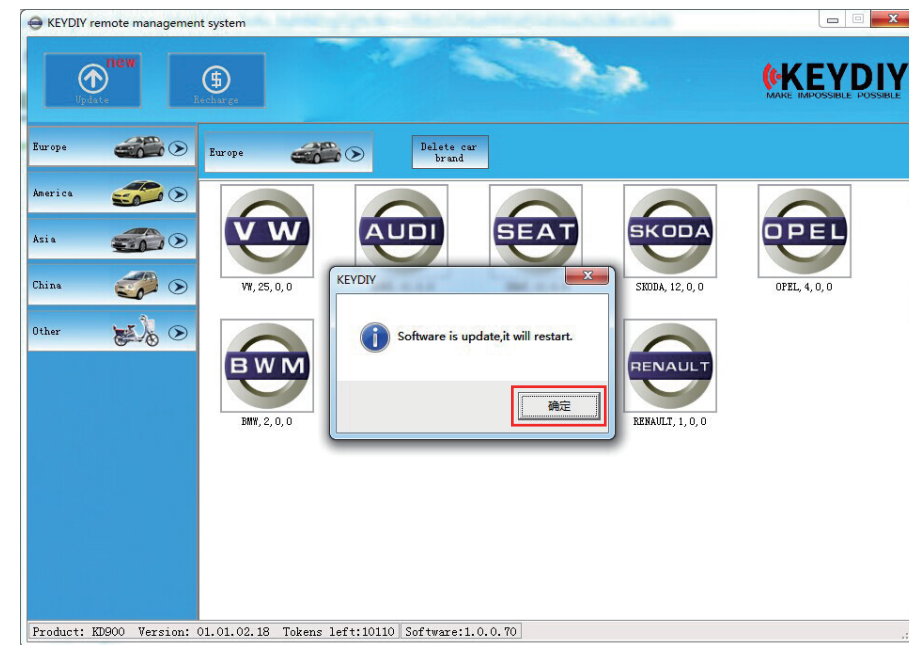


Click OK after updated.



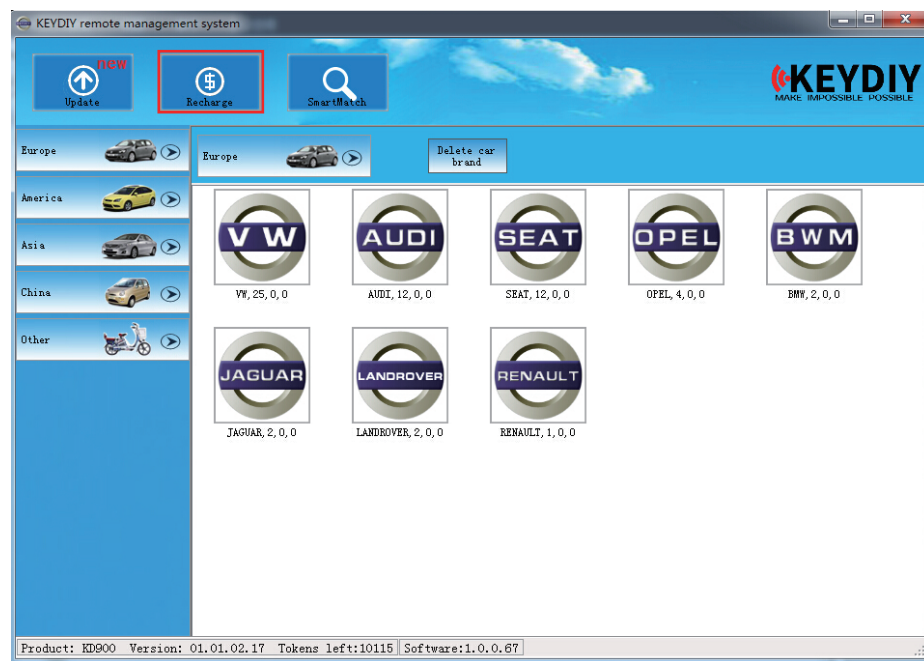
Then Exit.

Press OK, then software will restart itself, update finished. Sometimes, online update may not work, thus need to update manually, we will offer update file. (This problem rarely happen)

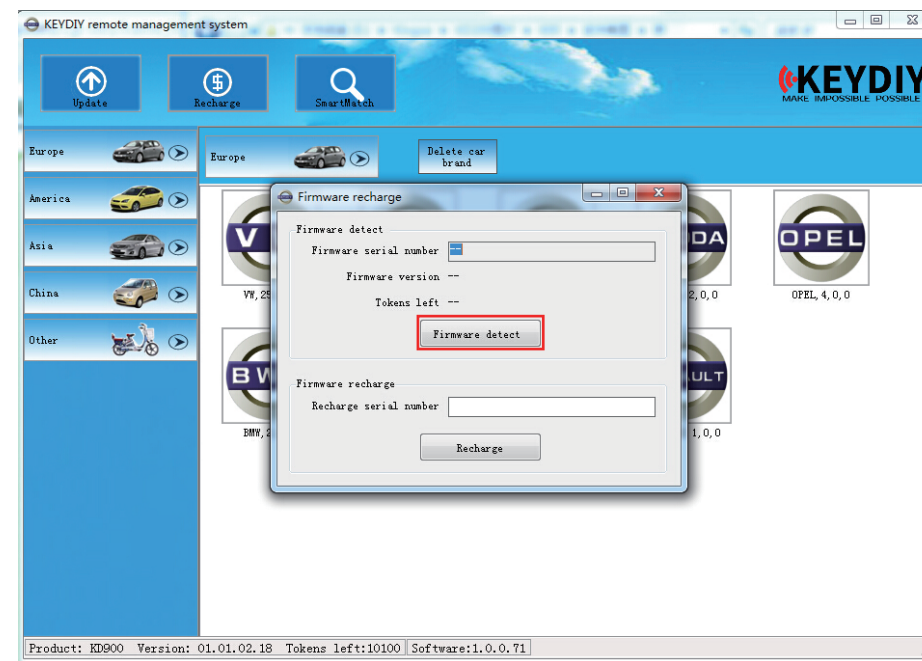


When updating, need to connect the net and download data, some anti-virus software may not allow our software to work. So when updating, please quit the anti-virus software to make sure the updating progress will work smoothly.

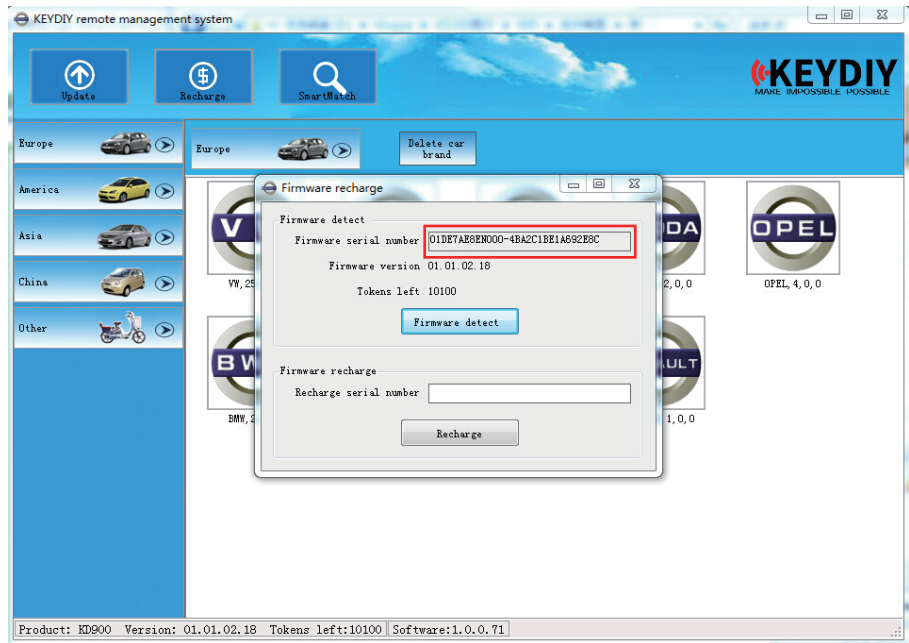
4.Recharge



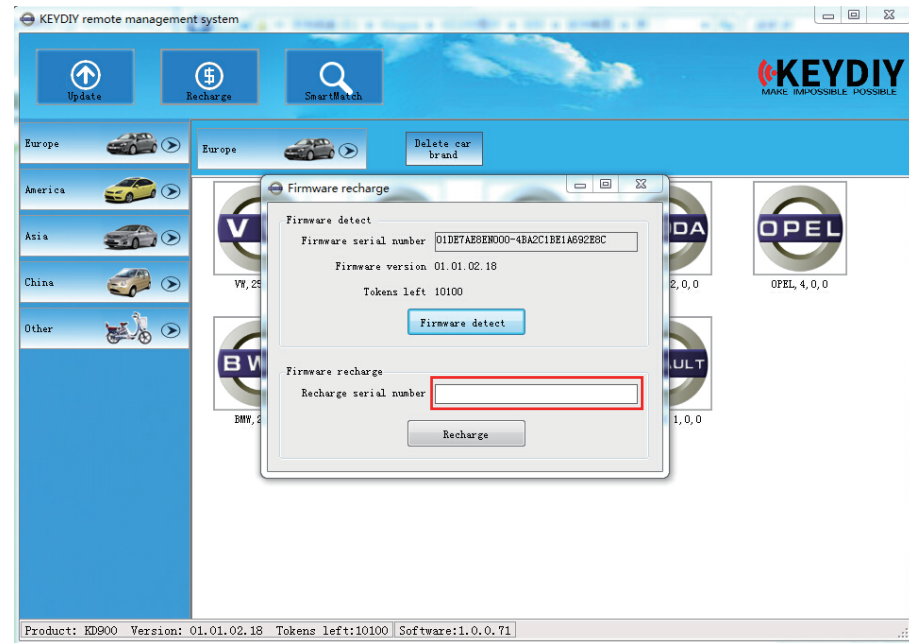
Click Recharge button on the top of the software site.



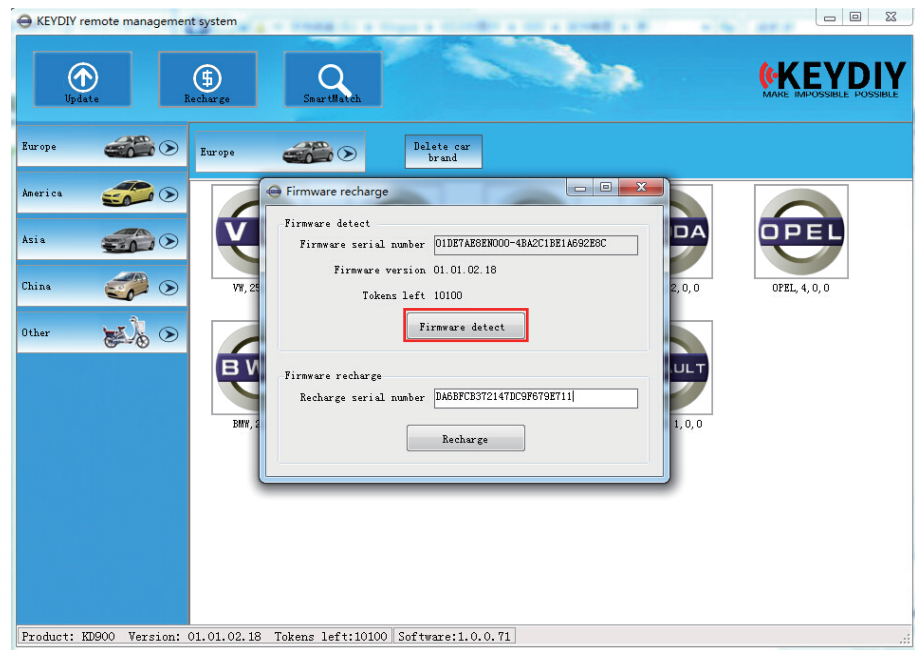
Click Firmware detect to get serial number.



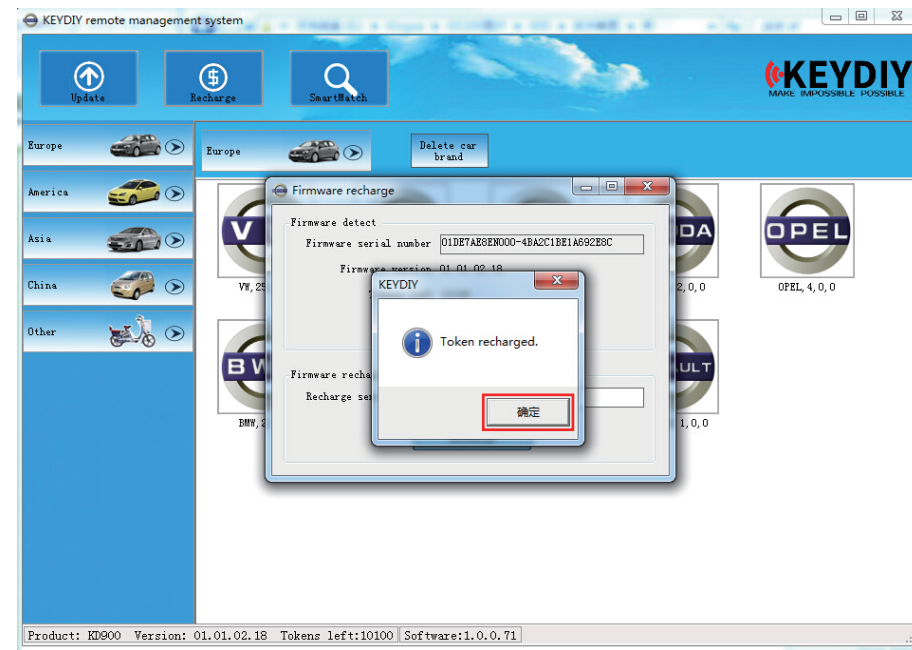
Send the serial number you get back to our dealers.



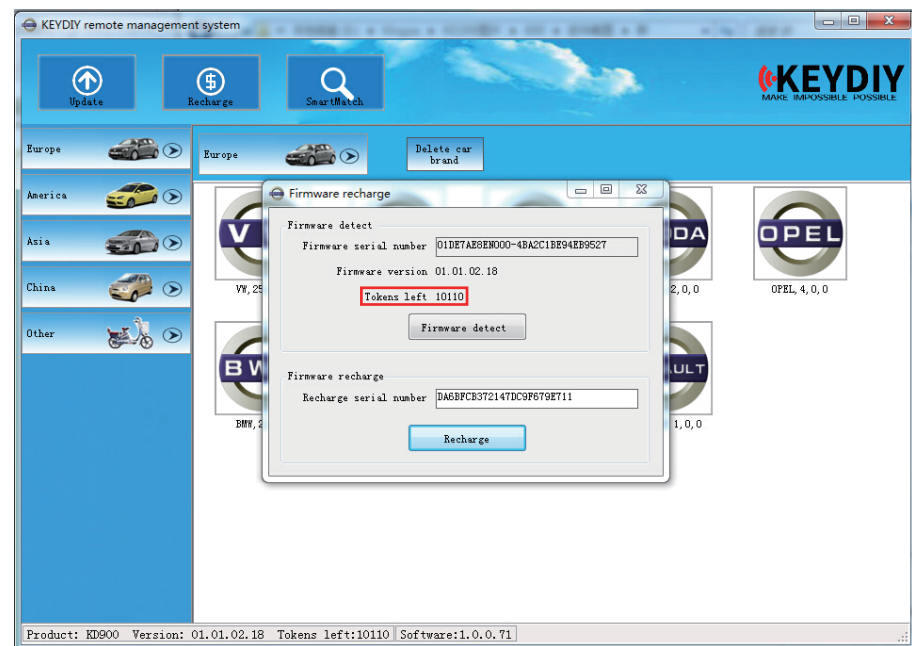
We will send you recharge number, put the recharge number in the blank:



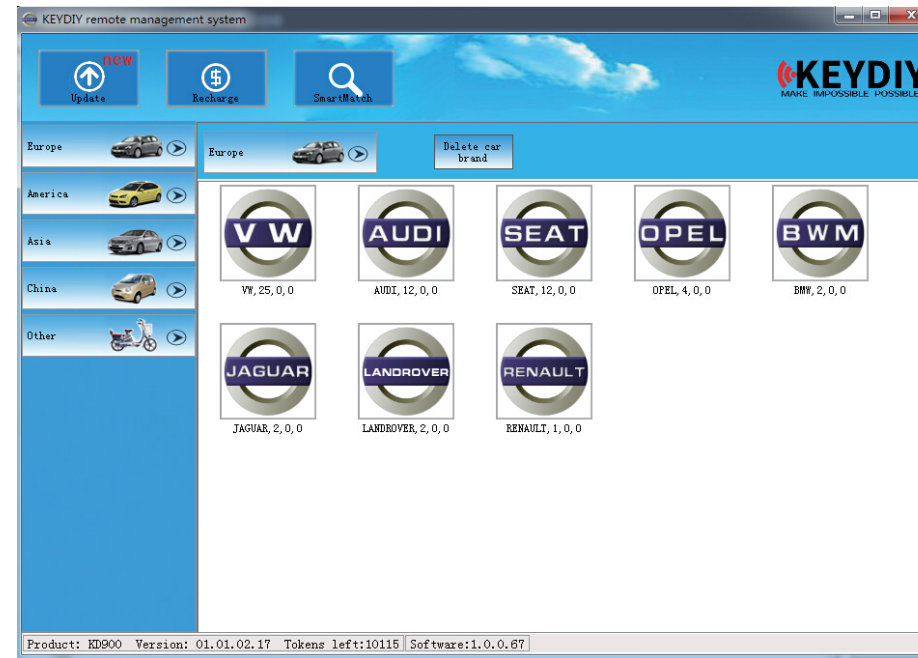
Click the Recharge button.



Click OK button, recharge finished.



Then you can see tokens left.



There are some site showed with Chinese because we here using pc system with Chinese system. You may don't know those words, but don't worry, just see the buttons we marked, when you using on your pc, it will show by your language.